



Sotheby's

EST.  
1744

Sotheby's

LONDON

THE JUBILEE SEASON

29 & 30 JUNE 2022 L22010/L22006/L22140/L22007

# THE JUBILEE SEASON

LONDON 29 & 30 JUNE 2022



Sotheby's

EST.  
1744

An abstract painting featuring a complex composition of geometric shapes, primarily triangles and rectangles, outlined in dark brown or black. The background is a mix of vibrant blue, green, and brown tones, with visible brushstrokes and a textured surface. In the lower left quadrant, there is a small, dark, boat-like shape. The overall style is reminiscent of mid-20th-century abstract art.

# THE JUBILEE SEASON

LONDON 29 & 30 JUNE 2022

Front cover  
LOT 10

Back cover  
LOT 120

This page  
LOT 113

Please note the sale of the Property is subject to Sotheby's Conditions of Business for Sellers and Conditions of Business for Buyers (which include Sotheby's Authenticity Guarantee).



## CONTENTS

4

**BRITISH ART: THE JUBILEE AUCTION:**  
LOTS 1–34

7

AUCTION INFORMATION

9

SPECIALISTS AND AUCTION ENQUIRIES

44

**MODERN & CONTEMPORARY EVENING AUCTION:**  
LOTS 101–149

47

AUCTION INFORMATION

49

SPECIALISTS AND AUCTION ENQUIRIES

96

**MODERN BRITISH DAY AUCTION:**  
LOTS 201–289

99

AUCTION INFORMATION

101

SPECIALISTS AND AUCTION ENQUIRIES

132

**MODERN & CONTEMPORARY DAY AUCTION**

138

**SESSION I:** LOTS 301–390

140

**SESSION II:** LOTS 401–510

135

AUCTION INFORMATION

137

SPECIALISTS AND AUCTION ENQUIRIES

208

INDEXES



## BRITISH ART: THE JUBILEE AUCTION



This page  
LOT 12

# BRITISH ART: THE JUBILEE AUCTION

AUCTION IN LONDON  
29 JUNE 2022  
5 PM

34-35 New Bond Street  
London, W1A 2AA  
+44 (0)20 7293 5000  
sothebys.com  
FOLLOW US @SOTHEBYS  
#SOTHEBYSJUBILEE

ALL EXHIBITIONS FREE  
AND OPEN TO THE PUBLIC

Thursday, 23 June  
9:00 AM - 5:00 PM

Friday, 24 June  
9:00 AM - 5:00 PM

Saturday, 25 June  
12:00 PM - 5:00 PM

Sunday, 26 June  
12:00 PM - 5:00 PM

Monday, 27 June  
9:00 AM - 5:00 PM

Tuesday, 28 June  
9:00 AM - 5:00 PM

Wednesday, 29 June  
9:00 AM - 12:00 PM

Sotheby's EST.  
1744

TO LEARN MORE ABOUT  
THE PROPERTY IN THIS  
SALE, PLEASE VISIT  
[SOTHEBYS.COM/L22010](https://www.sothebys.com/L22010)



This page  
LOT 20

## SPECIALISTS

### CONTEMPORARY

Tom Eddison  
*Senior Director, Senior Specialist*  
tom.eddison@sothebys.com

Emma Baker  
*Director, Head of Evening Sale*  
emma.baker@sothebys.com

### MODERN BRITISH

Frances Christie  
*Deputy Chairman, Senior Director*  
frances.christie@sothebys.com

Bryn Sayles  
*Director*  
bryn.sayles@sothebys.com

### OLD MASTER PAINTINGS

Julian Gascoigne  
*Senior Director, Senior Specialist*  
julian.gascoigne@sothebys.com

### PHOTOGRAPHS

Brandei Estes  
*Head of Photographs, EMEA*  
brandei.estes@sothebys.com

### BRITISH WATERCOLOURS & DRAWINGS

Mark Griffith-Jones  
*Director, Specialist*  
mark.griffith-jones@sothebys.com

### VICTORIAN PAINTINGS

Simon Toll  
*Senior Director, Senior Specialist*  
simon.toll@sothebys.com

### BOOKS & MANUSCRIPTS

Richard Fattorini  
*Senior Specialist*  
richard.fattorini@sothebys.com

## ENQUIRIES

### SALE NUMBER

L22010

### BIDS DEPARTMENT

+44 (0)20 7293 5283  
fax +44 (0)20 7293 6255  
bids.london@sothebys.com

Telephone bid requests should be received 24 hours prior to the sale. This service is offered for lots with a low estimate of £3,000 and above.

### PRE-SALE COORDINATOR

Beatrice Moller  
Beatrice.moller@sothebys.com  
+44 (0)20 7293 5732

### POST SALE SERVICES

Francesca Ovi  
Credit Control & Debt Collection  
FOR PAYMENT, DELIVERY  
AND COLLECTION  
+44 (0)20 7293 5220  
FAX +44 (0)20 7293 5910  
ukpostsaleservices@sothebys.com

TO LEARN MORE ABOUT  
THE PROPERTY IN THIS  
SALE, PLEASE VISIT  
**SOTHEBYS.COM/L22010**



1

PROPERTY FROM AN IMPORTANT PRIVATE COLLECTION,  
ENGLAND

## JOHN CONSTABLE, R.A.

(East Bergholt, Suffolk 1776 - 1837 Hampstead)

### Cloud Study

oil on paper, laid on canvas  
15.2 by 21.0 cm.; 6 by 8¼ in.

#### PROVENANCE

By descent to the artist's grandson, Hugh Goulding  
Constable (1868–1949);

From whom acquired by Leggatt Bros., London, by  
October 1899;

With Ackerman and Johnson, London, *circa* 1960s;

From whom acquired by the present owners.

£ 100,000-150,000



2

PROPERTY FROM THE BIEBUYCK FAMILY COLLECTION

## DAME MAGDALENE ODUNDO

(b. 1950)

### Untitled

signed *Odundo* and dated 1984 (on the base)

terracotta

height: 29cm.; 11½in.; diameter: 23cm.; 9in.

Executed in 1984.

#### PROVENANCE

Sale, Bonhams, New York, 5 June 2007, lot 90, where  
acquired by the present owner

£ 60,000-80,000



3

PROPERTY OF A DISTINGUISHED PRIVATE COLLECTOR

## FLORA YUKHNOVICH

(b. 1990)

### Boucher's Flesh

oil on linen  
215 by 180 cm. 84½ by 70⅞ in.  
Executed in 2017.

#### PROVENANCE

Acquired directly from the artist by the present owner

£ 200,000-300,000



4

PROPERTY FROM A FRENCH PRIVATE COLLECTION

## PAULINE BOTY

(1938 - 1966)

### With Love to Jean-Paul Belmondo

signed *BOTY*, titled and dated 62. (on canvas overlap)  
oil on canvas  
unframed: 152.5 by 122cm.; 60 by 48¼in.  
framed: 154 by 123.5cm.; 60½ by 48¾in.  
Executed in 1962.

#### PROVENANCE

The Artist's Estate

Whitford Fine Art, London, where acquired by the  
present owner in November 1999

£ 500,000-800,000



5

PROPERTY FROM AN AMERICAN CHARITABLE FOUNDATION

## DAME BARBARA HEPWORTH

(1903 - 1975)

### Elegy

painted beechwood

height (including base): 48.5cm.; 19in.

height (excluding base): 39cm.; 15¼in.

Executed in 1945, the present work is unique.

This work will be included in the revised catalogue raisonné of Barbara Hepworth's sculpture being prepared by Dr. Sophie Bowness under the catalogue no. BH 131.

### PROVENANCE

Alex. Reid & Lefevre, London, where acquired by Mr &

Mrs S. Kaye, Cookham, Berkshire, October 1946

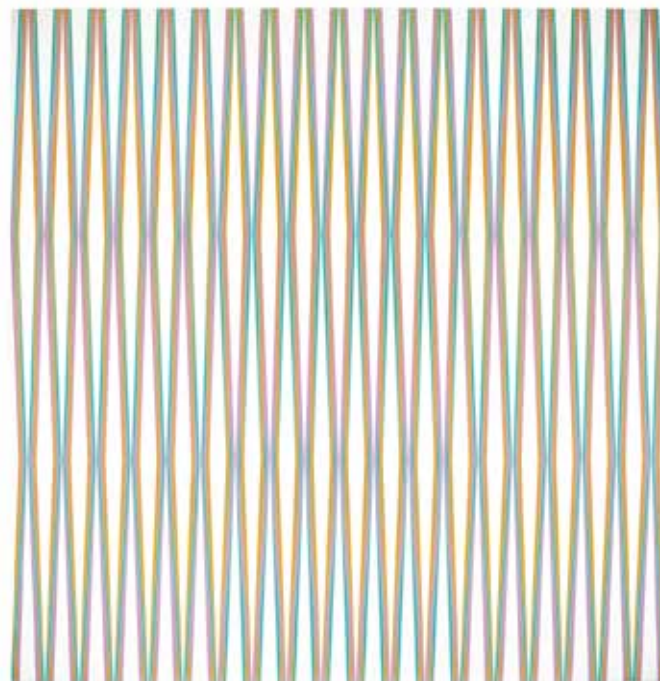
Gimpel Fils, London

McCrory Corporation, New York

Private Collection, Los Angeles, where acquired by the previous owner

Their sale, Sotheby's, London, 25 June 2008, lot 26, where acquired by the present owner

£ 1,700,000-2,500,000



6

PROPERTY FROM A PRIVATE IMPORTANT COLLECTION

## BRIDGET RILEY

(b. 1931)

### Tinct

signed *Riley* and dated 72 (on the overturn edge);

signed *Riley*, titled *Tinct* and dated 1972 (on the verso);

signed *Riley*, titled *Tinct* and dated 1972 (on the stretcher)

acrylic on canvas

145 by 141 cm. 57 by 55½ in.

Executed in 1972.

### PROVENANCE

Galerie Beyeler, Basel

The Ratner Family Collection, Chicago

Sotheby's New York, 26 February 1992, lot 198

(consigned by the above)

Acquired from the above by the present owner

£ 2,400,000-2,800,000



7

PROPERTY OF AN IMPORTANT PRIVATE COLLECTOR

## HOWARD HODGKIN

(1932 - 2017)

### Waterfall

signed *Howard Hodgkin*, titled *Waterfall* and dated 1991-92 (on the reverse)  
oil on wood  
45.6 by 54 by 3.5 cm. 18 by 21¼ by 1⅜ in.  
Executed in 1991-92.

#### PROVENANCE

Anthony d'Offay Gallery, London  
Rudolf and Leonore Blum, Switzerland (acquired directly from the above in 1993)  
Christie's London, 1 July 2014, lot 49 (consigned by the above)  
Acquired from the above by the present owner

£ 200,000-300,000



8

PROPERTY FROM A DISTINGUISHED PRIVATE COLLECTION,  
EUROPE

## FRANK AUERBACH

(b. 1931)

### Head of Gerda Boehm

oil on board  
44.5 by 37 cm. 17½ by 14½ in.  
Executed in 1965.

#### PROVENANCE

Marlborough Fine Art, London  
David Niven, Château-d'Œx  
Sotheby's London, 2 July 1992, lot 61 (consigned by the above)

Private Collection

Christie's London, 26 May 1995, lot 281  
David Bowie Collection (acquired directly from the above)  
Sotheby's London, *Bowie/Collector Part I*, 10 November 2016, lot 18 (consigned by the above)  
Acquired from the above by the present owner

£ 2,000,000-3,000,000



○ 9

PROPERTY FROM AN IMPORTANT PRIVATE COLLECTION,  
SOLD TO BENEFIT THE VANNUCCI ARTIST RESIDENCY

## LYNETTE YIADOM-BOAKYE

(b. 1977)

### Nearer than Kith, Further from Kind

titled *Nearer Than Kith, Further from Kind* and dated  
2018 (on the reverse of both canvases)

oil on linen

each: 110.5 by 60.5 cm. 43½ by 23¾ in.

Executed in 2018.

#### PROVENANCE

Jack Shainman Gallery, New York

Acquired from the above by the present owner

⊕ £ 400,000-600,000



○ 10

PROPERTY OF A DISTINGUISHED EUROPEAN COLLECTOR

## FRANCIS BACON

(1909 - 1992)

### Study for Portrait of Lucian Freud

oil on canvas

198 by 147.5 cm. 78 by 58 in.

Executed in May 1964.

#### PROVENANCE

Marlborough Fine Art Ltd., London

The Hon. Colin Tennant, London

Galleria Galatea, Turin

Private Collection, Europe

Acquired from the above by the present owner in  
1982-83

⊕ W Estimate upon request



11

PROPERTY FROM A DISTINGUISHED PRIVATE COLLECTION, UK

## HENRY MOORE, R.A.

(1898 - 1986)

### Family Group

bronze

height (including bronze base): 13cm.; 5in.

width (including bronze base): 10cm.; 4in.

Conceived in 1945, this work is from the edition of 7 plus 1 Artist's Cast.

#### PROVENANCE

Mary Moore

Marlborough Fine Art, London, where acquired by the father of the present owner in 1979

⊕ £ 250,000-350,000



12

PROPERTY FROM A DISTINGUISHED PRIVATE COLLECTION, ENGLAND

## RICHARD PARKES BONINGTON

(Arnold 1801 - 1828 London)

### Picardy Coast with Children – Sunrise

oil on canvas

43.2 by 54 cm.; 17 by 21 ¼ in.

#### PROVENANCE

Purchased from the artist at the British Institution in 1826 by Sir George Warrender (1782–1849);

His sale, London, Christie's, 3 June 1837, lot 15, to Herman;

Nicholas Joseph, 1st Marquis Maison (1771–1840), Paris;

From whom acquired by Henry McConnel (1801–1871) of Cressbrook, Derbyshire;

His sale ('The Important Collection of Modern Pictures formed by that Distinguished Connoisseur Henry McConnel, Esq., Deceased'), London, Christie's, 27 March 1886, lot 46, to Agnew's for 450 gns.;

With Thomas Agnew & Sons, London;

Sir Charles Tennant, 1st Baronet (1823–1906), by 1891;

By descent to his son, Edward Tennant, 1st Baron Glenconner (1859–1920) at the Glen, Peeblesshire;

By descent to his grandson Colin Tennant, 3rd Baron Glenconner (1926–2010) at The Glen, Peeblesshire;

By whom sold ('The Property of a Family Trust'), London, Sotheby's, 14 March 1984, lot 82, to Agnew's on behalf of the present owners.

£ 2,000,000-3,000,000



13

A VISION OF ARCADIA – AN IMPORTANT ENGLISH PRIVATE COLLECTION

## SIR JOHN EVERETT MILLAIS, P.R.A.

(1829 - 1896)

### Sleeping

signed with monogram (lower right)  
oil on canvas  
unframed: 92 by 71cm.; 36 by 28in.  
framed: 130 by 108cm.; 51 by 42½in.

#### PROVENANCE

Commissioned by Moore, McQueen & Co. on 28 September 1865 for 1,000 guineas - the commission was apparently taken over by Agnew's, who bought the picture from Millais on 9 July 1866, presumably for 1,000 guineas  
Bought from Agnew's by James Collier Harter, The Cedars, Leamington

Their sale, Christie's London, 26 April 1890, lot 45 (1,400 gns. to Lucas)

Charles J. Shaw, Thorn Bank, Leamington

Their sale, Christie's London, 18 June 1926, lot 100 (800 gns. to Sampson)

Acquired before 1934 by Lady Stuart-Wortley (1862-1936)

By descent to her daughter, The Hon. Clare Euphemia Stuart-Wortley (1889-1945)

By descent to her cousin, Edward G. Millais, by whom sold Christie's London, 21 March 1969, lot 69 (9,000 gns. to Gooden & Fox for a Millais family trust)

Their sale, Christie's London, 10 June 1999, lot 27

Sale, Christie's London, 11 June 2003, lot 9

Purchased at the above sale by the present owner

£ 1,000,000-1,500,000



14

PROPERTY FROM THE HSBC COLLECTION

## LAURENCE STEPHEN LOWRY, R.A.

(1887 - 1976)

### A Town Square

signed L S LOWRY and dated 1927 (lower left)  
oil on board  
unframed: 41 by 59cm.; 16¼ by 23¼in.  
framed: 56.5 by 74.5cm.; 22¼ by 29¼in.  
Executed in 1927.

#### PROVENANCE

Alex Reid & Lefevre, London

Midland Bank Plc by 1992, whence incorporated into HSBC Art Collection

⊕ £ 1,000,000-1,500,000



15

PROPERTY FROM A DISTINGUISHED PRIVATE COLLECTION

## DAVID HOCKNEY

(b. 1937)

### Woldgate Woods II, 16 & 17 May, 2006

signed *David Hockney* and dated *16 + 17 May 06* (on the reverse of panel 6); numbered (on the reverse of each panel)

oil on canvas, in 6 parts  
each: 91.4 by 121.9 cm. 36 by 48 in.  
overall: 182.9 by 365.8 cm. 72 by 144 in.  
Executed in 2006.

#### PROVENANCE

L.A. Louver, Venice, CA

Acquired from the above by the present owner

£ 10,000,000-15,000,000



16

THE PROPERTY FROM A PRIVATE COLLECTION, ENGLAND

## THOMAS GAINSBOROUGH, R.A.

(Sudbury 1727 - 1788 London)

### A wooded landscape in Suffolk

oil on canvas  
30.5 by 35 cm.; 12 by 13¾ in.

#### PROVENANCE

Probably William Beckford (1759–1844), Fonthill Abbey, Wiltshire;

By descent to his daughter Susan, wife of Alexander, 10th Duke of Hamilton (1767–1852);

Thence by descent until sold, Hamilton Palace sale, London, Christie's, 8 July 1882, lot 1104, to Agnews for 168 pounds;

Robert Windsor-Clive, later 1st Earl of Plymouth

(1857–1923), by 1888;

Thence by descent to his grandson, Hon. Rowland Windsor-Clive (1938–1965);

By whom sold, London, Christie's, 25 March 1966, lot 79;

Where by purchased by Leggatt and Colnaghi for 18,000 gns.;

With Agnews in 1966;

From whom presumably purchased by Irene, Countess of Plymouth (1902–1989) at an unknown date;

Anonymous sale, London, Christie's, 22 April 1983, lot 33, where acquired by the father of the present owner for £65,000.

£ 150,000-250,000



17

PROPERTY OF AN IMPORTANT BRITISH PRIVATE  
COLLECTOR

**BANKSY**

(b. 1974)

**Turf War**

oil and emulsion on canvas  
254.5 by 254.5 cm. 100½ by 100½ in.  
Executed in 2003, this work is unique.  
This work is accompanied by a Pest Control Certificate  
of Authenticity.

**PROVENANCE**

Acquired directly from the artist by the present owner

⊕ W £ 4,000,000-6,000,000



18

PROPERTY FROM AN IMPORTANT ENGLISH COLLECTION

**JOSEPH MALLORD WILLIAM  
TURNER, R.A.**

(London 1775 - 1851)

**A view of London and the river Thames  
from Vauxhall with Westminster Bridge**

Watercolour over pencil;  
inscribed lower centre: *Vauxhall*  
334 by 464 mm

**PROVENANCE**

British Private Collection, until 2000;  
from whom acquired by Andrew Clayton-Payne;  
with Andrew Clayton-Payne, London;  
British Private collection, by 2016

£ 300,000-500,000



19

PROPERTY FROM A EUROPEAN PRIVATE COLLECTION

## LEON KOSSOFF

(1926 - 2019)

### Dalston Lane, Summer

oil on board  
unframed: 106 by 122cm.; 41¾ by 48in.  
framed: 128 by 143.5cm.; 50½ by 56½in.  
Executed in 1974.

#### PROVENANCE

Fischer Fine Art, London, where acquired by Peter Gough, 1981

Fischer Fine Art, London, where acquired by Howard M. Casper, 1985

Robert Miller Gallery, New York

Private Collection

Offer Waterman & Co., London, where acquired by a Private Collector, 1997

Hazlitt Holland Hibbert, London, where acquired by the previous owner in 2007

Their sale, Sotheby's, London, 10 February 2015, lot 34

Hazlitt Holland Hibbert, London, where acquired by the present owner in 2015

£ 350,000-450,000



20

PROPERTY FROM THE COLLECTION OF BARBARA KER-SEYMER

## EDWARD BURRA

(1905 - 1976)

### Minuit Chanson

signed *E.J. Burra* and dated 1931 (lower left)  
watercolour and bodycolour on paper  
unframed: 54.5 by 73cm.; 21½ by 28¾in.  
framed: 69.5 by 88cm.; 27½ by 34½in.  
Executed in 1931.

#### PROVENANCE

Gifted by the Artist to Barbara Ker-Seymer in the 1930s, and thence by family descent to the present owner

£ 1,500,000-2,500,000



21

PROPERTY FROM AN IMPORTANT PRIVATE COLLECTION

## BRIDGET RILEY

(b. 1931)

### Lilac Between

signed *Riley* and dated '08/'84 (on the overturn edge);  
signed *Riley*, titled *Lilac Between*, dated 2008/1984  
and variously inscribed (on the overlap); signed *Riley*,  
titled *Lilac Between*, dated 2008/1984 and variously  
inscribed (on the stretcher)  
oil on linen  
230.8 by 190 cm. 90% by 74¾ in.  
Executed in 2008–1983.

### PROVENANCE

Karsten Schubert, London  
Ivor Braka, London (acquired directly from the above  
in 2008)  
Honor Fraser Inc., Los Angeles  
Acquired from the above by the present owner in 2011

£ 1,200,000-1,800,000



22

PROPERTY FROM AN IMPORTANT AMERICAN COLLECTION

## DAME BARBARA HEPWORTH

(1903 - 1975)

### Makutu

signed *Barbara Hepworth*, dated 1969 CAST 1970,  
numbered 4/9 and stamped with foundry mark *Morris  
Singer FOUNDERS LONDON* (on the base)  
bronze  
height (including base): 75.5cm.; 29¾in.  
Conceived in 1969 and cast in 1970, the present work  
is number 4 from the edition of 9 + 0.  
This work will be included in the revised catalogue  
raisonné of Barbara Hepworth's sculpture being

prepared by Dr. Sophie Bowness under the catalogue  
no. BH 505.

### PROVENANCE

Acquired by The Morris Singer Sculpture Association  
Ltd in April 1971  
Sale, Sotheby's, London, 2 July 1980, lot 185, where  
acquired by the Alwin Gallery, London  
Marlborough Fine Art, London, where acquired by the  
grandmother of the present owner in 1985, and thence  
by descent

£ 700,000-1,000,000



23

PROPERTY FROM AN IMPORTANT PRIVATE COLLECTION

## HURVIN ANDERSON

(b. 1965)

21st Feb 71

signed *Hurvin A* and dated *Oct 13* (on the overlap)  
acrylic and oil on linen  
240.3 by 240.3 cm. 94½ by 94½ in.  
Executed in 2013.

### PROVENANCE

Thomas Dane Gallery, London  
Acquired from the above by the present owner in 2013

£ 1,200,000-1,800,000



24

PROPERTY FROM A PRIVATE COLLECTION, ENGLAND

## SIMON VERELST

(The Hague c.1644 - c.1710 London)

Portrait of Nell Gwyn (1650-1687)

oil on canvas  
123.3 by 98.5 cm.; 48½ by 38¾ in.

### PROVENANCE

Probably commissioned by George Villiers, 2nd Duke of Buckingham (1628-1687);  
Probably the same painting recorded in the collection of the late Duke of Buckingham by Valentine Green in 1777;  
Recorded in the collection of Stuart Mackenzie of Ilford, Essex, in 1974 (according to a photograph in the Heinz Library);  
With Hildegard Fritz-Denneville Fine Arts Ltd, London;  
From whom purchased by the present owners.

£ 150,000-200,000



25

PROPERTY FROM A DISTINGUISHED PRIVATE COLLECTION

## LAURENCE STEPHEN LOWRY, R.A.

(1887 - 1976)

### A Street in Clitheroe

signed L.S. LOWRY and dated 1957 (lower right)

oil on canvas

unframed: 61 by 76cm.; 24 by 30in.

framed: 81 by 98cm.; 32 by 38½in.

Executed in 1957.

#### PROVENANCE

Alick Leggat, Esq.

Crane Kalman Gallery, London, where acquired by the present owner, 10th September 1982

⊕ £ 1,000,000-1,500,000



26

PROPERTY FROM A DISTINGUISHED BRITISH PRIVATE COLLECTION

## FRANCIS CAMPBELL BOLEAU CADELL, R.S.A., R.S.W.

(1883 - 1937)

### Reflection

signed F.C.B. Cadell and dated '15 (lower right); also

signed F.C.B. Cadell. and inscribed No 1./ Reflection

(on the backboard)

oil on canvas

unframed: 63.5 by 76cm.; 25 by 30in.

framed: 88 by 100.5cm.; 34½ by 39½in.

Executed in 1915.

#### PROVENANCE

Major Ion R. Harrison and thence by descent to the previous owners

Their sale, Sotheby's, London, *The Colourists: Pictures from the Harrison Collection*, 12 June 2018, lot 119, where acquired by the present owner

£ 650,000-850,000



27

## LYNN CHADWICK, R.A.

(1914 - 2003)

### Maquette for Jubilee II

each inscribed *CHADWICK C3*, dated 1983 and numbered 2/9 (on each cloak)  
bronze

(2)

height (largest): 90cm.; 35½in.; width (overall): 139cm.; 54¾in.

depth (overall): 108cm.; 42½in.

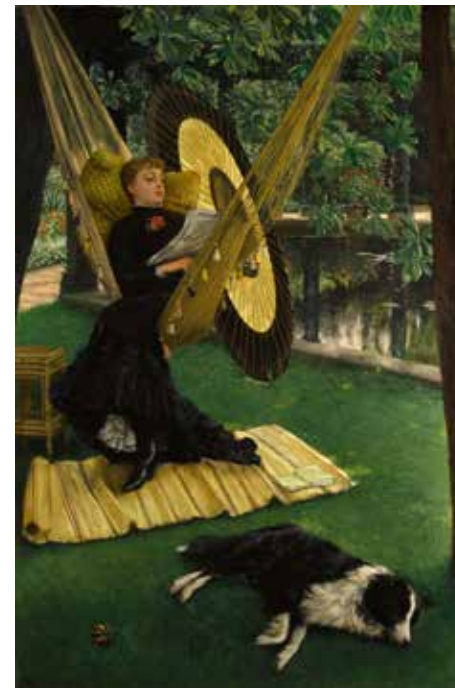
Conceived in 1983, the present work is number 2 from the edition of 9.

We are grateful to the Estate of Lynn Chadwick for their kind assistance with the cataloguing of the present work.

#### PROVENANCE

The Artist, from whom acquired by a Private Collector  
Their sale, Christie's, New York, 15 May 2003, lot 143, where acquired by a Private Collector  
Their sale, Sotheby's, London, 26 June 2008, lot 378, where acquired by the present owner

Ω ⊕ W £ 300,000-500,000



28

A VISION OF ARCADIA – AN IMPORTANT ENGLISH PRIVATE COLLECTION

## JAMES JACQUES JOSEPH TISSOT

(1836 - 1902)

### The Hammock

signed *J.J. Tissot* (lower left)

oil on canvas

unframed: 127 by 86cm.; 50 by 34in.

framed: 142 by 102cm.; 56 by 40in.

#### PROVENANCE

According to Tissot's sales notebook, purchased in 1881 for £160 by Richard Donkin, M.P. (1836 - 1919), of Albermarle, Wimbledon Common

Sale, Kende Galleries of Gimbel Brothers at Jay Gould Mansion New York, 19 February 1943, lot 61

Private collection, East Coast of America

Sale, Christie's London, 28 November 2001, lot 21

Purchased at the above sale by the present owner

£ 1,500,000-2,000,000



29

PROPERTY FROM A PRIVATE COLLECTION

## JOHN WOOTTON

(Snitterfield, Warwickshire circa 1678 - 1764 London)

The Duke of Devonshire's celebrated  
*Flying Childers*, held by a groom

signed on the rock, lower right: *JWootton* ('JW' in  
monogram)  
oil on canvas  
101.6 by 127 cm.; 40 by 50 in.

### PROVENANCE

By descent at Osberton Hall, Nottinghamshire, in the  
Foljambe family until sold;

Anonymous sale ('The Property of a Gentleman'),  
London, Christie's, 23 May 2008, lot 89, where  
acquired by the present owner.

£ 100,000-150,000



30

PROPERTY OF AN IMPORTANT PRIVATE COLLECTOR

## DAMIEN HIRST

(b. 1965)

### Catholicism

butterflies and household gloss on canvas  
243.8 by 152.4 cm. 96 by 60 in.  
Executed in 2004.

### PROVENANCE

Blain Southern, London

Acquired from the above by the present owner

£ 500,000-700,000



31

## SEAN SCULLY

(b. 1945)

### Landline Yellow Yellow

signed *Sean Scully*, titled *Landline Yellow Yellow* and dated 2014 (on the reverse)

oil on aluminium

216.5 by 190 cm. 85¼ by 74⅞ in.

Executed in 2014.

#### PROVENANCE

The Artist

Blain Southern, London

Acquired from the above by the present owner

£ 600,000-800,000



32

## GILBERT AND GEORGE

(b. 1943 and b. 1942)

### Swear

signed *Gilbert & George*, titled *Swear* and dated 1985; each titled *Swear* and numbered (on the backing board)

hand-dyed gelatin silver prints in artists' frames, in 24 parts

each: 60.5 by 50.2 cm. 23⅞ by 19⅞ in.

overall: 241.3 by 302.3 cm. 95 by 119 in.

Executed in 1985.

#### PROVENANCE

Private Collection, New York

Zwerner and Wirth, New York

Private Collection, Europe (acquired directly from the above in 2004)

Sotheby's London, 13 October 2011, lot 38 (consigned by the above)

Acquired from the above by the present owner

£ 150,000-200,000



33

PROPERTY OF A LADY

## ERNEST H. SHEPARD

Eeyore, Owl, Toad, Mole, Ratty, Piglet, Badger, and Winnie-the-Pooh preparing for the Coronation of Queen Elizabeth II

pen and black ink and pencil on Winsor & Newton Ltd. Whatman water-colour board, signed with initials "EHS" in the left of the drawing, visible area 12 b 36cm., mounted, framed and glazed

### PROVENANCE

Christie's South Kensington, Original Book Illustrations, 11 July 1997, lot 30

⊕ £ 50,000-80,000



△ 34

GENEROUSLY DONATED BY THE ARTIST TO BENEFIT THE PLATINUM JUBILEE PAGEANT

## CHRIS LEVINE

(b. 1960)

### Lightness of Being (2008)

accompanied by a signed Certificate of Authenticity  
unique lenticular lightbox  
image: 116.8 by 82 cm ; 46 by 32¼ in.  
frame: 122.7 by 88.2 cm ; 48¾ by 34¾ in.  
Executed in 2022.

### PROVENANCE

Directly from the artist's studio

† £ 100,000-150,000



# MODERN & CONTEMPORARY

EVENING AUCTION



# MODERN & CONTEMPORARY

## EVENING AUCTION

AUCTION IN LONDON  
29 JUNE 2022  
6 PM

34-35 New Bond Street  
London, W1A 2AA  
+44 (0)20 7293 5000  
[sothebys.com](https://www.sothebys.com)  
FOLLOW US @SOTHEBYS  
#SOTHEBYSMODERN  
#SOTHEBYSCONTEMPORARY

ALL EXHIBITIONS FREE  
AND OPEN TO THE PUBLIC

Thursday, 23 June  
9:00 AM - 5:00 PM

Friday, 24 June  
9:00 AM - 5:00 PM

Saturday, 25 June  
12:00 PM - 5:00 PM

Sunday, 26 June  
12:00 PM - 5:00 PM

Monday, 27 June  
9:00 AM - 5:00 PM

Tuesday, 28 June  
9:00 AM - 5:00 PM

Wednesday, 29 June  
9:00 AM - 12:00 PM

Sotheby's EST.  
1744

TO LEARN MORE ABOUT  
THE PROPERTY IN THIS  
SALE, PLEASE VISIT  
[SOTHEBYS.COM/L22006](https://www.sothebys.com/L22006)



## SPECIALISTS

### MODERN

Thomas Boyd-Bowman  
*Director, Head of Evening Sales*  
thomas.boyd-bowman@sothebys.com

Helena Newman  
*Chairman, Sotheby's Europe*  
*Worldwide Head of Department*  
helena.newman@sothebys.com

Sam Valette  
*Vice Chairman, Private Sales*  
sam.valette@sothebys.com

Simon Stock  
*Senior Director, Senior Specialist*  
simon.stock@sothebys.com

Tania Remoundos  
*Senior Director, Senior International Specialist*  
tania.remoundos@sothebys.com

Alexandra Christl  
*Deputy Head of Department, Senior Specialist*  
alexandra.christl@sothebys.com

### CONTEMPORARY

Emma Baker  
*Director, Head of Evening Sale*  
emma.baker@sothebys.com

James Sevier  
*Senior Director, European Head of Contemporary Art*  
james.sevier@sothebys.com

Isabelle Paagman  
*Senior Director, Senior International Specialist*  
isabelle.paagman@sothebys.com

Tom Eddison  
*Senior Director, Senior Specialist*  
tom.eddison@sothebys.com

Marina Ruiz Colomer  
*Director, Specialist*  
marina.ruizcolomer@sothebys.com

## ENQUIRIES

### SALE NUMBER

L22006

### BIDS DEPARTMENT

+44 (0)20 7293 5283  
fax +44 (0)20 7293 6255  
bids.london@sothebys.com

Telephone bid requests should be received 24 hours prior to the sale. This service is offered for lots with a low estimate of £3,000 and above.

### PRE-SALE COORDINATORS

#### MODERN

Daniela Constantino  
+44 20 7293 6733  
Daniela.Constantino@sothebys.com

#### CONTEMPORARY

Alexandra Kett-Bauman  
+44 20 7293 5492  
Alexandra.Kett-Baumann@sothebys.com

### POST SALE SERVICES

Warren van der Mescht  
Senior Post-Sale Experience Manager  
FOR PAYMENT, DELIVERY  
AND COLLECTION  
+44 (0)20 7293 6144  
warren.vandermescht@sothebys.com

TO LEARN MORE ABOUT  
THE PROPERTY IN THIS  
SALE, PLEASE VISIT  
**SOTHEBYS.COM/L22006**



101

## MICHEL MAJERUS

(1967 - 2002)

### Untitled (New Comer)

signed *Majerus* and dated *00* (on the reverse)

oil on canvas

200 by 200 cm. 78¾ by 78¾ in.

Executed in 2000.

#### PROVENANCE

Eleni Koroneou Gallery, Athens

Private Collection, Europe

Acquired from the above by the present owner

⊕ W £ 100,000-150,000



102

PROPERTY FROM AN IMPORTANT PRIVATE COLLECTION, USA

## SIMONE LEIGH

(b. 1967)

### Blue/Black

terracotta, porcelain, epoxy and india ink

39.4 by 19 by 22.3 cm. 15½ by 7½ by 9 in.

Executed in 2014.

#### PROVENANCE

Gavlak Gallery, Palm Beach

Acquired from the above by the present owner in 2014

⊕ £ 200,000-300,000



103

PROPERTY FROM A DISTINGUISHED PRIVATE COLLECTION, USA

## ANNA WEYANT

(b. 1995)

### Buffet

signed *Anna Weyant* and dated 2020 (on the reverse)

oil on linen

91.2 by 122 cm. 36 by 48 in.

Executed in 2020.

#### PROVENANCE

Blum & Poe, Los Angeles

Acquired from the above by present owner

± £ 100,000-150,000



⇒ 104

PROPERTY FROM AN IMPORTANT PRIVATE COLLECTION

## RENÉ MAGRITTE

(1898 - 1967)

### La Saveur des larmes

signed *Magritte* (lower right)

gouache on paper

33 by 36cm., 13 by 14½in.

Executed in 1938 or 1939.

#### PROVENANCE

Camille Gutt, Brussels (acquired in 1939)

Etienne Gutt, Brussels (by descent from the above.

Sold: Sotheby's, London, 1st July 1981, lot 388)

Waddington Galleries, London (purchased at the above sale)

Acquired from the above in 1982

⊕ £ 1,200,000-1,800,000



105

PROPERTY OF A PRIVATE IMPORTANT COLLECTION

## GERHARD RICHTER

(b. 1932)

### Study for Clouds (Contre-jour)

signed *Richter*, dated *XI.70* and numbered *276* (on the reverse)  
oil on canvas  
80 by 100 cm. 31½ by 39⅜ in.  
Executed in 1970.

#### PROVENANCE

Galerie Rudolf Zwirner, Cologne  
Private Collection, Germany  
Sotheby's London, 26 June 2002, lot 12 (consigned by the above)  
Simon C. Dickinson Ltd., London (acquired directly from the above)  
Acquired from the above by the present owner in 2002

£ 6,000,000-8,000,000



106

PROPERTY FROM A PRIVATE AMERICAN COLLECTION

## JEAN ARP

(1886 - 1966)

### Larme de galaxie

marble  
height (without base): 69cm., 27⅞in.  
Carved *circa* 1962.

#### PROVENANCE

Galerie Edouard Loeb, Paris (acquired by 1964)  
Private Collection (acquired by 1967)  
Galerie Jan Krugier, Geneva (acquired by 1969)  
Brook Street Gallery, London  
Sale: Christie's, New York, 15th May 1986, lot 355  
Purchased at the above sale by the present owner

£ 750,000-1,000,000



○ 107

PROPERTY FROM AN IMPORTANT PRIVATE COLLECTION

## PAUL KLEE

(1879 - 1940)

### Beflaggte Stadt (Town Decked with Flags)

signed *Klee* (lower right); titled, dated 1927, numbered 2. and indistinctly inscribed in pencil *S.C.I.* on the artist's mount  
gouache, watercolour and Spritztechnik on paper laid down on the artist's mount  
image size: 29.3 by 22.1cm., 11½ by 8¾in.  
mount size: 49.7 by 38.7cm., 19⅝ by 15¼in.  
Executed in 1927.

#### PROVENANCE

Lily Klee, Bern (inherited from the artist in 1940)  
Dr Hans Meyer-Benteli (Klee Gesellschaft), Bern (acquired from the above in 1946)  
Dr Hans & Erika Meyer-Benteli, Bern (acquired in 1953)  
Ted & Meret Schaap-Meyer, Vallamand-Dessous (by descent from the above in 1956. Sold: Christie's, London, 30th November 1992, lot 26)  
Galerie Beyeler, Basel (purchased at the above sale)  
Acquired from the above in 1992

£ 600,000-800,000



108

PROPERTY FROM A PRIVATE COLLECTION

## EGON SCHIELE

(1890 - 1918)

### Stehender Halbakt (Standing semi-nude)

signed *EGON SCHIELE* and dated 1917 (lower right)  
charcoal on paper  
46 by 29.6cm., 18 by 11⅞in.  
Executed in 1917.

#### PROVENANCE

Private Collection, Cardiff  
Sale: Phillips, New York, 11th November 1985, lot 42  
Private Collection (purchased at the above sale. Sold: Sotheby's, London, 5th February 2007, lot 14)  
Purchased at the above sale by the present owner

£ 500,000-700,000



○ 109

PROPERTY FROM AN IMPORTANT PRIVATE COLLECTION

## ALBERTO GIACOMETTI

(1901 - 1966)

### Portrait d'Annette

signed *Alberto Giacometti* (lower right)  
oil on canvas laid down on canvas  
33.7 by 14.9cm., 13¼ by 5⅞in.  
Painted in 1952.

The authenticity of this work has been confirmed by the Comité Giacometti and it is recorded in the Alberto Giacometti database as AGD4416.

#### PROVENANCE

Sidney Janis Gallery, New York  
Private Collection  
Private Collection  
Private Collection  
B. C. Holland Gallery Inc., Chicago  
Gloria Schwartz, Chicago (sold: Sotheby Parke Bernet, New York, 11th May 1977, lot 89)  
Art Salon Takahata, Osaka (purchased at the above sale)  
Private Collection  
Sale: Christie's, New York, 20th November 1998, lot 749  
Purchased at the above sale

£ 800,000-1,200,000



110

PROPERTY FROM AN IMPORTANT PRIVATE AMERICAN COLLECTION

## ANDY WARHOL

(1928 - 1987)

### Self Portrait

stamped with the artist's signature, dated 1986, and authenticated by Frederick Hughes (on the overlap);  
numbered *PA40.056* (on the stretcher)  
acrylic and silkscreen ink on canvas  
203.2 by 203.2 cm. 80 by 80 in.  
Executed in 1986.

#### PROVENANCE

The Estate of Andy Warhol, New York  
Anthony d'Offay Gallery, London (acquired directly from the above in March 1989)  
Acquired from the above by the present owner in 1998

± W £ 12,000,000-18,000,000



111

PROPERTY FROM AN IMPORTANT AMERICAN COLLECTION

## ERNST LUDWIG KIRCHNER

(1880 - 1938)

### Selbstbildnis mit Pfeife (Self-Portrait with a Pipe)

oil on canvas  
52.5 by 42.8cm., 20 7/8 by 16 7/8 in.  
Painted in 1907.

#### PROVENANCE

Karl Schmidt-Rottluff, Berlin  
Hugo Simon, Berlin, Paris & Rio de Janeiro (acquired by 1931)  
Fine Art Associates (Otto Gerson), New York (acquired by 1958)  
Anne Burnett Tandy, Fort Worth (acquired by 1968.  
Sold by her estate: Sotheby Parke Bernet, New York, 5th November 1981, lot 213)  
Purchased at the above sale by the family of the present owner  
This lot is offered pursuant to a settlement agreement between the present owner and the heirs of Hugo Simon.

± £ 8,000,000-12,000,000



○ 112

PROPERTY FROM AN IMPORTANT PRIVATE COLLECTION

## WASSILY KANDINSKY

(1866 - 1944)

### Strich Zentraler (Central Line)

signed with the monogram and dated 24 (lower left);  
dedicated in Cyrillic *Dorogomu Alekseyu Grigor'evichu Javlesnkomu serdechno predannyi Kandinsky. Dresden 14 II 25* on the reverse  
gouache, watercolour and brush and ink on paper laid down on card  
34.7 by 22.8cm., 13 5/8 by 9 in.  
Executed in November 1924.

#### PROVENANCE

Alexej von Jawlensky, Wiesbaden (a gift from the artist in February 1925)  
Helene Jawlensky, Wiesbaden (wife of the above; inherited from the above in 1941)  
Andreas Jawlensky, Wiesbaden & Locarno (by descent from the above in 1965)  
Maria Jawlensky, Locarno (by descent from the above in 1984)  
Leonard Hutton Galleries, New York (acquired from the above in 1984-85)  
Acquired from the above in 1993

£ 700,000-1,000,000



○ 113

PROPERTY FROM A PRIVATE AMERICAN COLLECTION

## PAUL KLEE

(1879 - 1940)

### Kleiner See Hafen (Small Seaport)

signed *Klee* (upper right); titled, dated 1937 and numbered *q-14* on the reverse  
oil and graphite on panel  
35.8 by 63.5cm., 14 $\frac{1}{8}$  by 25in.  
Painted in 1937.

#### PROVENANCE

Galerie Simon (Daniel-Henry Kahnweiler), Paris (on commission from the artist)

Buchholz Gallery (Curt Valentin), New York (acquired from the artist through the above in 1939)

Richard K. Weil, St. Louis (acquired from the above.  
Sold: Sotheby's, London, 5th December 1973, lot 78)

Galerie Beyeler, Basel (purchased at the above sale)  
Private Collection, Canada (acquired from the above in 1983)

Sale: Sotheby's, New York, 13th May 1986, lot 52

Private Collection, Japan (purchased at the above sale)

Private Collection (by descent from the above)

Acquired from the above by the present owner in 2002

± £850,000-1,200,000



114

PROPERTY OF A DISTINGUISHED PRIVATE COLLECTOR, USA

## CHRISTINA QUARLES

b. 1985

### We Woke In Mourning Jus Tha Same

signed *Christina Quarles*, titled *We Woke in Mourning Jus Tha Same* and dated 2017 (on the reverse)  
acrylic on canvas  
152.4 by 121.9 cm. 60 by 48 in.  
Executed in 2017.

#### PROVENANCE

David Castillo Gallery, Miami

Acquired from the above by the present owner in 2017

± W £350,000-450,000



115

PROPERTY FROM AN IMPORTANT PRIVATE COLLECTION

## SHARA HUGHES

(b. 1981)

### You Are My Sunshine

signed *Shara Hughes*, dated 2010, titled *You Are My Sunshine*, and variously inscribed (on the reverse)  
oil, acrylic, enamel, glitter, paint pen and spray paint  
on canvas  
121.7 by 152.5 cm. 47 7/8 by 60 in.  
Executed in 2010.

#### PROVENANCE

Museum 52

Acquired from the above by the present owner in 2010

W £ 200,000-300,000



116

PROPERTY FROM A PRIVATE COLLECTION, NEW YORK

## OUATTARA WATTS

(b. 1957)

### Vertigo #11

signed *Ouattara Watts*, titled *Vertigo #11*, dated 2011 and variously inscribed on the reverse; signed *Ouattara* on the stretcher  
mixed media on canvas, in 2 parts  
overall: 200 by 260 cm. 78 7/8 by 102 1/4 in.  
Executed in 2011.

#### PROVENANCE

Acquired directly from the artist in 2011

‡ W £100,000-150,000



117

PROPERTY FROM A PRIVATE COLLECTION

## STANLEY WHITNEY

(b. 1946)

### The Wild West

signed *Stanley Whitney*, titled *The Wild West* and dated 2013 (on the reverse)  
oil on canvas  
183 by 182.5 cm. 72 by 71 7/8 in.  
Executed in 2013.

#### PROVENANCE

Galerie Nordenhake, Berlin  
Private Collection, New Jersey (acquired from the above in 2015)  
Thence by descent to the present owner

± W £ 300,000-400,000



118

PROPERTY OF A PRIVATE DISTINGUISHED COLLECTOR

## LUCIO FONTANA

(1899 - 1968)

### Concetto spaziale, Attese

signed *L. Fontana*, titled *Concetto spaziale, Attese*, and inscribed *Vorrei addormentarmi su il più bel prato verde* (on the reverse)  
waterpaint on canvas  
95 by 74 cm. 37 1/2 by 29 1/8 in.  
Executed in 1964.

#### PROVENANCE

Galerie Burén, Stockholm  
Private Collection, Sweden (acquired from the above in 1966)

Christie's London, 27 June, 1996, lot 52  
Private Collection (acquired directly from the above)  
Christie's London, 24 October 2005, lot 23  
Private Collection, Japan  
FaMa Gallery, Verona  
Private Collection, Beirut  
Sotheby's London, 11 February 2020, lot 20 (consigned by the above)  
Acquired from the above by the present owner

± £ 1,500,000-2,000,000



119

A VISION OF ARCADIA – AN IMPORTANT ENGLISH PRIVATE COLLECTION

## CAMILLE PISSARRO

(1830 - 1903)

### Vue de Bazincourt, inondation, soleil couchant

signed *C. Pissarro.* and dated 93 (lower right)  
oil on canvas  
46 by 55cm., 18½ by 21½in.  
Painted in 1893.

#### PROVENANCE

Galerie Durand-Ruel, Paris (acquired from the artist on 15th March 1893)

Baron Denys Cochin, Paris (acquired from the above on 15th March 1893)

Galerie Durand-Ruel, Paris (acquired from the above on 6th May 1897)

Galerie Bernheim-Jeune, Paris & Galerie Georges Petit, Paris (acquired from the above on 13th February 1899)

Fernand Bezançon, Paris

Galerie de l'Élysée (Jean Metthey), Paris

Private Collection, France (acquired from the above in 1949)

Private Collection, France (by descent from the above. Sold: Christie's, London, 25th June 2002, lot 3)

Purchased at the above sale by the present owner

£ 1,500,000-2,000,000



120

A VISION OF ARCADIA – AN IMPORTANT ENGLISH PRIVATE COLLECTION

## CLAUDE MONET

(1840 - 1926)

### Vétheuil

signed *Claude Monet* and dated 1880 (lower right)  
oil on canvas  
60.1 by 100.2cm., 23½ by 39½in.  
Painted in 1880.

#### PROVENANCE

Marie-François Firmin-Girard, Paris

Galerie Durand-Ruel, Paris (acquired from the above on 11th April 1888)

Arthur Tooth & Sons, London (acquired from the above on 19th June 1936)

Andrew T. Reid, Perthshire (acquired from the above in 1936. Sold by his estate: Christie's, London, 27th March 1942, lot 104)

Private Collection, United Kingdom (purchased at the above sale)

Private Collection, London (by descent from the above. Sold: Christie's, London, 25th June 2002, lot 6)

Purchased at the above sale by the present owner

£ 10,000,000-15,000,000



121

A VISION OF ARCADIA – AN IMPORTANT ENGLISH PRIVATE COLLECTION

## PIERRE-AUGUSTE RENOIR

(1841-1919)

### Place de la Trinité

signed *Renoir*. (lower left)  
oil on canvas  
51 by 62.7cm., 20½ by 24½in.  
Painted circa 1878.

This work will be included in the forthcoming Renoir Digital Catalogue Raisonné, currently being prepared under the sponsorship of the Wildenstein Plattner Institute, Inc.

#### PROVENANCE

Dr Georges de Bellio, Paris (*probably* acquired from the artist)  
Victorine Donop de Monchy (née de Bellio), Paris (by descent from the above in 1894)  
Lucien Moline, Paris

Gustave Fayet, Igny (acquired from the above in 1903)  
Madeleine Fayet, Igny (inherited from the above in 1925)  
Paul Rosenberg, Paris (acquired from the above in 1928)  
Alvan T. Fuller, Massachusetts (acquired by 1935)  
Mrs Alvan T. Fuller, Massachusetts (wife of the above; inherited from the above in 1958)  
Alvan T. Fuller Jr., New Hampshire (by descent from the above in 1959)  
Wildenstein & Co., New York (acquired from the above in 1972)  
Private Collection, Switzerland (acquired from the above in 1980)  
Sale: Sotheby's, London, 2nd December 1986, lot 20  
Private Collection, Los Angeles (purchased at the above sale)  
Acquired from the above by the present owner in 2002

£ 4,000,000-6,000,000



122

DRAWN TOGETHER: THE COLLECTION OF MARCIA AND STANLEY GUMBERG

## GEORG BASELITZ

(b. 1938)

### 2 Pappeln (2 Poplars)

signed *G Baselitz* and dated 75 (lower left); signed *Baselitz*, titled *2 Pappeln*, dated Sept. 1975 New York (on the reverse)  
oil on canvas  
233.7 by 176.5 cm. 92½ by 69½ in.  
Executed in 1975.

#### PROVENANCE

Private Collection (acquired directly from the artist)  
Christie's New York, 5 May 1987, lot 90 (consigned by the above)  
Acquired from the above by the present owner

± W £ 800,000-1,200,000



○ 123

DRAWN TOGETHER: THE COLLECTION OF MARCIA AND STANLEY GUMBERG

## HOWARD HODGKIN

(1932 - 2017)

### Still Life

oil on wood  
32.3 by 34 cm. 12½ by 13⅜ in.  
Executed in 1982-84.

#### PROVENANCE

M. Knoedler & Co., New York

Acquired from the above by the present owner in February 1985

£ 150,000-200,000



124

DRAWN TOGETHER: THE COLLECTION OF MARCIA AND STANLEY GUMBERG

## WILLEM DE KOONING

(1904 - 1997)

### Untitled XVI

signed *de Kooning* (on the stretcher)  
oil on canvas  
195.5 by 223.5 cm. 77 by 88 in.  
Executed in 1985.

#### PROVENANCE

Xavier Fourcade, Inc., New York

Acquired from the above by the present owner in March 1986

W £ 3,000,000-4,000,000



○ 125

PROPERTY FROM AN IMPORTANT PRIVATE AMERICAN COLLECTION

## PABLO PICASSO

1881 - 1973

### ARLÉSIE

signed *Picasso* (lower right); dated 14.7.58 and numbered  
III (upper left)  
oil on canvas  
55.2 by 38.1cm., 21¾ by 15 in.  
Painted on 14th July 1958.

#### PROVENANCE

Solomon & Company Fine Art, New York  
Private Collection, New York (acquired from the above  
circa 1986)  
By descent from the above to the present owner

£ 2,500,000-3,500,000



126

PROPERTY OF AN IMPORTANT PRIVATE COLLECTOR

## GERHARD RICHTER

(b. 1932)

### Abstraktes Bild

signed *Richter*, numbered 630-4 and dated 1987 (on  
the reverse)  
oil on canvas  
120 by 100 cm. 47¼ by 39¾ in.  
Executed in 1987.

#### PROVENANCE

Galerie Fred Jahn, Munich  
Private Collection, Germany (acquired directly from  
the above in July 1988)

Schönwald Fine Arts, Dusseldorf / Anthony Meier  
Fine Arts, San Francisco  
Seoul Auction, 15 September 2007, lot 170  
Gana Art, Seoul  
Galerie Michael Schultz, Berlin  
Galerie Springer & Winckler, Berlin  
Private Collection, London  
Acquired from the above by the present owner

£ 1,200,000-1,800,000



127

## GEORG BASELITZ

(b. 1938)

Immer bereit für die Vergangenheit  
(Always ready for the past)

signed G Baselitz, titled 'Immer bereit für die  
Vergangenheit' and dated 16.8.2010 (on the reverse)

oil on canvas  
300 by 250 cm. 118½ by 98½ in.  
Executed in 2010.

### PROVENANCE

Contemporary Fine Arts, Berlin  
Heiner Bastian Fine Art, Berlin

Private Collection (acquired directly from the above  
in 2011)

Christie's New York, 18 May 2017, lot 570 (consigned  
by the above)

Private Collection, London

Sotheby's Hong Kong, 6 October 2020, lot 1120  
(consigned by the above)

Acquired from the above by the present owner

± € W £ 500,000-700,000



128

PROPERTY FROM A DISTINGUISHED PRIVATE COLLECTION

## SIGMAR POLKE

(1941 - 2010)

### Stereometrie

artificial resin on polyester and bamboo shirt, in two  
parts  
each: 130.8 by 149.8 cm. 51½ by 59 in.  
overall: 130.8 by 299.6 cm. 51½ by 118 in.  
Executed in 1999.

### PROVENANCE

Michael Werner Gallery, New York

Acquired from the above by the present owner in  
October 2007

± € W £ 500,000-700,000



130

PROPERTY FROM A PRIVATE ITALIAN COLLECTION

## REMBRANDT BUGATTI

(1884 - 1916)

### Éléphant d'Asie (mendiant)

inscribed *R. Bugatti*, numbered 5 and stamped with the foundry mark *CIRE PERDUE A.A. HÉBRARD*

bronze

length: 76cm., 29 7/8in.

Conceived circa 1908 and cast in bronze in a numbered edition of 5.

This work is recorded in the archives of the Rembrandt Bugatti Conservatoire, Paris.

#### PROVENANCE

Mr Ferruccio Stephano, Milan (acquired in 1910)

Mr Claudio Terruzzi, Milan

Acquired from the above by the present owner in 1998

± W £ 900,000-1,200,000



131

PROPERTY FROM A PRIVATE AMERICAN COLLECTION

## MAN RAY

(1890 - 1976)

### Figures in a Landscape

signed *MAN RAY*; and dated 1914 (lower right)

oil on canvas

91.8 by 97cm., 36 1/8 by 38 1/4in.

Painted in 1914.

Andrew Strauss and Timothy Baum of the Man Ray Expertise Committee have confirmed the authenticity of this work and that it will be included in the Catalogue of Paintings of Man Ray, currently in preparation.

#### PROVENANCE

The Daniel Gallery, New York

Arthur Jerome Eddy, Chicago (acquired from the above in 1915)

Jerome O. Eddy, Chicago & Skull Valley, Arizona (by descent from the above in 1920. Sold: Williams, Barker & Severn Co., Chicago, The Late Arthur J. Eddy, Extraordinary Collection of One Hundred and Ten Modernistic Paintings and Antique Oriental Rugs, 20th January 1937, lot 154)

Joseph Randall Shapiro, Chicago (sold: Sotheby's, New York, 12th November 1987, lot 370B)

Purchased at the above sale by the present owner

± £ 650,000-850,000



132

## ANDREAS GURSKY

(b. 1955)

### Chicago, Board of Trade III

signed *Andreas Gursky* (on a label affixed to the backing board)  
c-print

sheet: 217 by 301.5 cm. 85¾ by 118¾ in.

framed: 223.5 by 307.4 cm. 88 by 121 in.

Executed in 1999-2009, this work is number 1 from an edition of 6

#### PROVENANCE

Sprüth Magers, London

Acquired from the above by the present owner in 2009

£ 800,000-1,200,000



133

PROPERTY OF A DISTINGUISHED PRIVATE COLLECTOR

## MARK GROTJAHN

(b. 1968)

### Untitled (Free Capri 52.12)

signed *M. Grotjahn*, titled *Untitled (Free Capri 52.12)*,  
dated 2019, and variously inscribed (on the overlap)

oil on cardboard mounted on linen

203.5 by 160.5 cm. 80¼ by 63¼ in.

Executed in 2019.

#### PROVENANCE

Gagosian Gallery, New York

Acquired from the above by the present owner

£ 1,500,000-2,000,000



134

PROPERTY FROM AN IMPORTANT EUROPEAN COLLECTION

## PAUL KLEE

(1879 - 1940)

### Milderung (Softening)

signed *Klee* (lower centre)  
watercolour on primed burlap  
60 by 38.5cm., 23 $\frac{5}{8}$  by 15 $\frac{1}{8}$ in.  
Painted in 1938.

#### PROVENANCE

Lily Klee, Bern (inherited from the artist in 1940)  
Klee-Gesellschaft, Bern (acquired from the above in 1946)  
Galerie Rosengart, Lucerne (acquired from the above in 1947)  
Clifford Odets, New York & Los Angeles (acquired from the above in 1947)

Buchholz Gallery (Curt Valentin), New York  
George David Thompson, Pittsburgh  
Galerie Beyeler, Basel (acquired from the above in 1960)  
Galleria Foscherari, Bologna (acquired from the above in 1971)  
Private Collection, Italy  
Thomas Ammann Fine Art, Zurich  
Galerie Thomas, Munich  
Private Collection (acquired by 1985)  
Galerie Thomas, Munich  
Acquired from the above by the present owner in 2005

± £ 400,000-600,000



135

PROPERTY OF AN IMPORTANT PRIVATE COLLECTOR

## ANDY WARHOL

(1928 - 1987)

### Mao

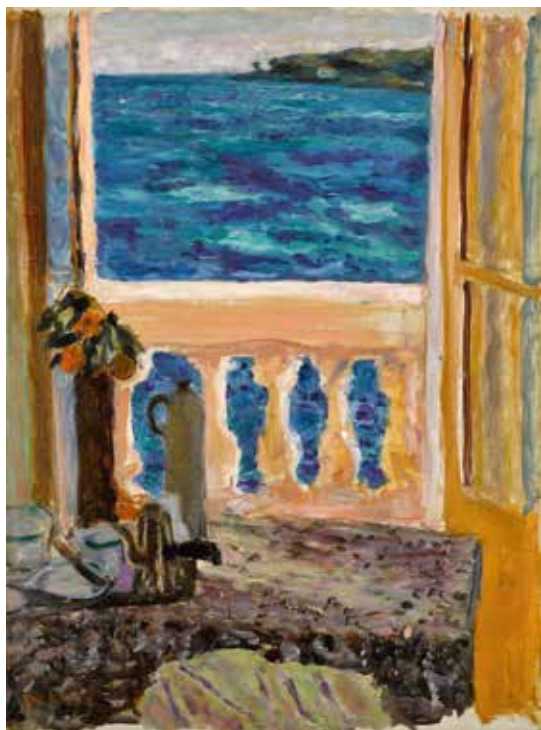
stamped by the Estate of Andy Warhol and The Andy Warhol Foundation for the Visual Arts and numbered *PA 80.007* (on the overlap); numbered *PA 80.7* (on the stretcher)  
acrylic and silkscreen ink on canvas  
66 by 56 cm. 26 by 22 in.  
Executed in 1973.

#### PROVENANCE

The Andy Warhol Foundation for the Visual Arts, Inc., New York

Gagosian Gallery, New York  
Peter Brant, USA  
Sotheby's New York, 12 May 2004, lot 17 (consigned by the above)  
Private Collection, USA (acquired directly from the above)  
Sotheby's London, 7 February 2007, lot 27 (consigned by the above)  
Skarstedt Gallery, New York  
Van de Weghe Fine Art, New York  
Acquired from the above by the present owner in 2009

± £ 1,500,000-2,000,000



136

PROPERTY FROM A DISTINGUISHED PRIVATE COLLECTION

## PIERRE BONNARD

(1867 - 1947)

### Fenêtre ouverte sur la mer

signed *Bonnard* (lower left)

oil on canvas

52.3cm by 38.4cm., 20 $\frac{3}{8}$  by 15 $\frac{1}{8}$ in.

Painted in 1919.

#### PROVENANCE

Émile Laffon, Paris

Private Collection, France

Galerie Beyeler, Basel (acquired from the above in 1959)

Colonel C. Michael Paul, Palm Beach (acquired from the above in 1959. Sold by his estate: Sotheby's, New York, 21st February 1985, lot 31)

William Gelender, New York (purchased at the above sale)

Sale: Sotheby's, London, 25th March 1986, lot 22

Purchased at the above sale by the family of the present owner

£ 600,000-800,000



137

PROPERTY FROM A DISTINGUISHED PRIVATE COLLECTION

## CAMILLE PISSARRO

(1830 - 1903)

### Statue d'Henri IV et hôtel de la Monnaie, matin ensoleillé

signed *C. Pissarro.* and dated 1901. (lower left)

oil on canvas

46.6 by 55.4cm., 18 $\frac{3}{8}$  by 21 $\frac{3}{4}$ in.

Painted in 1901.

#### PROVENANCE

Dr Daniel Parenteau, Paris (a gift from the artist in 1901)

Galerie de l'Elysée (Jean Metthey), Paris

Sam Salz, Paris & New York (acquired *circa* 1938)

Herman Shulman, New York (acquired from the above on 5th April 1940 and until at least 1944)

Louis Stern Galleries, Beverly Hills (acquired by 1985)

Ruth O'Hara Fine Art, New York (acquired *circa* 1986)

Sale: Christie's, London, 29th June 1987, lot 19

Purchased at the above sale by the family of the present owner

£ 700,000-1,000,000



138

PROPERTY FROM A DISTINGUISHED PRIVATE COLLECTION

## EDGAR DEGAS

(1834 - 1917)

### Danseuse, arabesque ouverte sur la jambe droite, bras droit à terre

inscribed *Degas*, numbered *2D* and stamped with the foundry mark *CIRE PERDUE A.A.HÉBRARD*  
bronze

height: 28cm., 11in.

Conceived in wax *circa* 1882-95 and cast in bronze by the A.A. Hébrard Foundry, Paris from 1919. The present example was cast by 1929.

#### PROVENANCE

(possibly) Walther Halvorsen, Paris & Oslo  
Justin K. Thannhauser, Munich, Berlin & Paris  
(acquired in August 1929 and until *circa* 1960)  
Kaplan Gallery, London  
Private Collection, London (acquired from the above in 1961. Sold: Christie's, London, 28th November 1988, lot 3)  
Purchased at the above sale by the family of the present owner

£ 300,000-500,000



△ 139

PROPERTY FROM THE COLLECTION OF J.E. SAFRA

## AUGUST STRINDBERG

(1849-1912)

### Wave V

oil on canvas  
100 by 70.8cm., 39¼ by 27¾in.  
Painted in 1901

#### PROVENANCE

August Falck, Stockholm (Falck (1882-1938) was a Swedish actor, known for his performances in Strindberg's *Miss Julie* and Victor Sjöström's *A Man There Was*, based on a poem by Henrik Ibsen)

Torsten Tegnér, Stockholm (Tegnér (1888-1977) was a Swedish athlete and journalist, and son of the Swedish composer Alice Tegnér. He was the editor of the *Idrottsbladet* newspaper for over fifty years)

Sale: Bukowski's, Stockholm, 25 April 1956, lot 99

Sidney Kingsley and Madge Evans Kingsley (Sidney Kingsley (1906-95) was an American dramatist who received the Pulitzer Prize for drama for his play *Men in White* in 1934; his sale: Sotheby's, New York, 23 October 1990, lot 192)

Purchased from the above by the present owner

£ 2,000,000-3,000,000



140

PROPERTY OF A PRIVATE COLLECTOR

## RICHARD PRINCE

(b. 1949)

### Untitled (Cowboy)

signed *Richard Prince*, dated 1998 and numbered 1/2  
(on the reverse)  
ektacolor photograph  
127 by 191.7 cm. 50 by 75½ in.  
Executed in 1998, this work is number 1 from an  
edition of 2, plus 1 artist's proof.

#### PROVENANCE

Gladstone Gallery, New York

Acquired from the above by the present owner in  
September 2004

± W £ 700,000-900,000



141

A VISION OF ARCADIA – AN IMPORTANT ENGLISH PRIVATE  
COLLECTION

## EUGÈNE BOUDIN

(1824 - 1898)

### Plage aux environs de Trouville. Marée basse

signed *E. Boudin*. and dated 88. (lower right)  
oil on canvas  
41.2 by 55.1cm., 16¼ by 21¾in.  
Painted in 1888.

#### PROVENANCE

Sale: Hôtel Drouot, Paris, 15th February 1929

Galerie Durand-Ruel, Paris (purchased at the above  
sale)

Arthur Tooth & Sons, London (acquired from the above  
on 5th November 1934)

Mr & Mrs W.S. Robinson, Australia (acquired from the  
above in 1934 and until at least 1971)

Duke Street Gallery, London

Acquired by the present owner in 2002

£ 120,000-180,000



142

PROPERTY FROM A PRIVATE COLLECTION, EUROPE

**ALBERT OEHLÉN**

(b. 1954)

Untitled

oil and paper collage on canvas  
180 by 230 cm. 70 7/8 by 90 1/2 in.  
Executed in 2012.

**PROVENANCE**

Gagosian Gallery, Beverly Hills

Private Collection

Acquired from the above by the present owner in 2007

± € W £ 500,000-700,000



○ 144

PROPERTY FROM AN IMPORTANT PRIVATE COLLECTION

**PAUL KLEE**

(1879 - 1940)

Vogelkomoedie (Bird Comedy)

indistinctly signed Klee, dated 1919 and numbered 61  
(upper right)  
gouache on silk  
25.4 by 35cm., 10 by 13 3/4 in.  
Executed in 1919.

**PROVENANCE**

Dr Wilhelm Mayer, Munich (acquired from the artist in April 1919)

Erich & Siddi Heckel, Berlin (acquired circa 1920)

Private Collection, Europe (by descent from the above in 1977. Sold: Sotheby's, London, 28th June 1994, lot 37)

Purchased at the above sale

£ 600,000-800,000



145

PROPERTY FROM A DISTINGUISHED PRIVATE COLLECTION

## PAUL SIGNAC

(1863 - 1935)

### Brume rose. Isola di San Giorgio (Venise)

signed *P Signac* and dated *04* (lower right)  
oil on canvas  
47 by 55.5cm., 18½ by 21¾in.  
Painted in 1904.

#### PROVENANCE

Galerie Druet, Paris (until 1905)  
Hans Eberhard von Bodenhausen, Essen  
Galerie Bernheim-Jeune, Paris (acquired from the above on 24th February 1913)

Aksnauyus [sic] (acquired from the above in 1920)  
Private Collection  
Galerie de l'Elysée (Alex Maguy), Paris (acquired by 1955)  
Nahum Goldmann, Jerusalem & Paris  
Private Collection, Jerusalem & Paris (by descent from the above. Sold: Sotheby's, New York, 17th November 1983, lot 126)  
Private Collection (purchased at the above sale)  
Sale: Sotheby's, London, 25th March 1986, lot 14  
Purchased at the above sale by the family of the present owner

£ 700,000-1,000,000



146

A VISION OF ARCADIA – AN IMPORTANT ENGLISH PRIVATE COLLECTION

## EUGÈNE BOUDIN

(1824 - 1898)

### Trouville, l'heure du bain

signed *E. Boudin* (lower left) and dated *Trouville 81*.  
(lower right)  
oil on panel  
20.4cm by 36.5cm., 8 by 14½in.  
Painted in 1881.

#### PROVENANCE

Galerie Durand-Ruel, Paris (acquired from the artist by July 1891)  
M. Devilder, Paris & Roubaix (acquired from the above on 8th May 1929)  
Mrs Frances Vogel, New York (acquired by 1967)  
Acquavella Galleries, New York (acquired from the above)  
Frank Sinatra, Los Angeles (acquired from the above in 1971. Sold: Sotheby's, London, 27th June 1977, lot 5)  
Robert Noortman, New York & London (purchased at the above sale)  
Dickinson Roundell, New York & Simon Dickinson, London (acquired in 1999)  
Acquired from the above by the present owner in 2001

£ 500,000-700,000



147

A VISION OF ARCADIA – AN IMPORTANT ENGLISH PRIVATE COLLECTION

## CAMILLE PISSARRO

(1830 - 1903)

### Le Déversoir et l'écluse à Saint-Ouen-l'Aumône

signed C. Pissarro and dated 1872 (lower left)  
oil on canvas  
38.3 by 55.6cm., 15¼ by 21⅞in.  
Painted in 1872.

#### PROVENANCE

Louis Latouche, Paris

Galerie Durand-Ruel, Paris (acquired from the above on 21st June 1872)

Galerie Miethke, Vienna (acquired from the above on 12th January 1912)

Baron Adolf Kohner, Budapest (acquired circa 1919)

Knoedler & Co., New York

Sam Salz, New York (acquired from the above in February 1949)

Antonio Aniante, Paris (acquired from the above in February 1950)

Private Collection, Switzerland (acquired by 1979)

Madelon Foundation, New York (acquired by 1982 and until 1995)

Private Collection, Australia (sold: Sotheby's, New York, 8th November 2001, lot 111)

Purchased at the above sale by the present owner

£ 500,000-700,000



148

AN EYE FOR COLOUR: PROPERTY FROM THE COLLECTION OF MRS ELIZABETH COROB

## MARINO MARINI

(1901 - 1980)

### Piccolo Cavaliere (Small Rider)

bronze

height: 46.5cm., 18¼in.

Conceived in 1950 and cast in bronze in an edition of six. The present work is number six.

The authenticity of this work has been confirmed by the Fondazione Marino Marini.

#### PROVENANCE

Robert von Hirsch, Basel (sold: Sotheby's, London, 26th June 1978, lot 766)

Purchased at the above sale by the family of the present owner

⊕ £ 300,000-500,000



149

PROPERTY FROM A DISTINGUISHED PRIVATE AMERICAN COLLECTION

## DAMIEN HIRST

(b. 1965)

### Skull of a Unicorn

solid sterling silver and marble base

overall: 129.6 by 22.6 by 63.4 cm. 51 by 8<sup>7</sup>/<sub>8</sub> by 25 in.

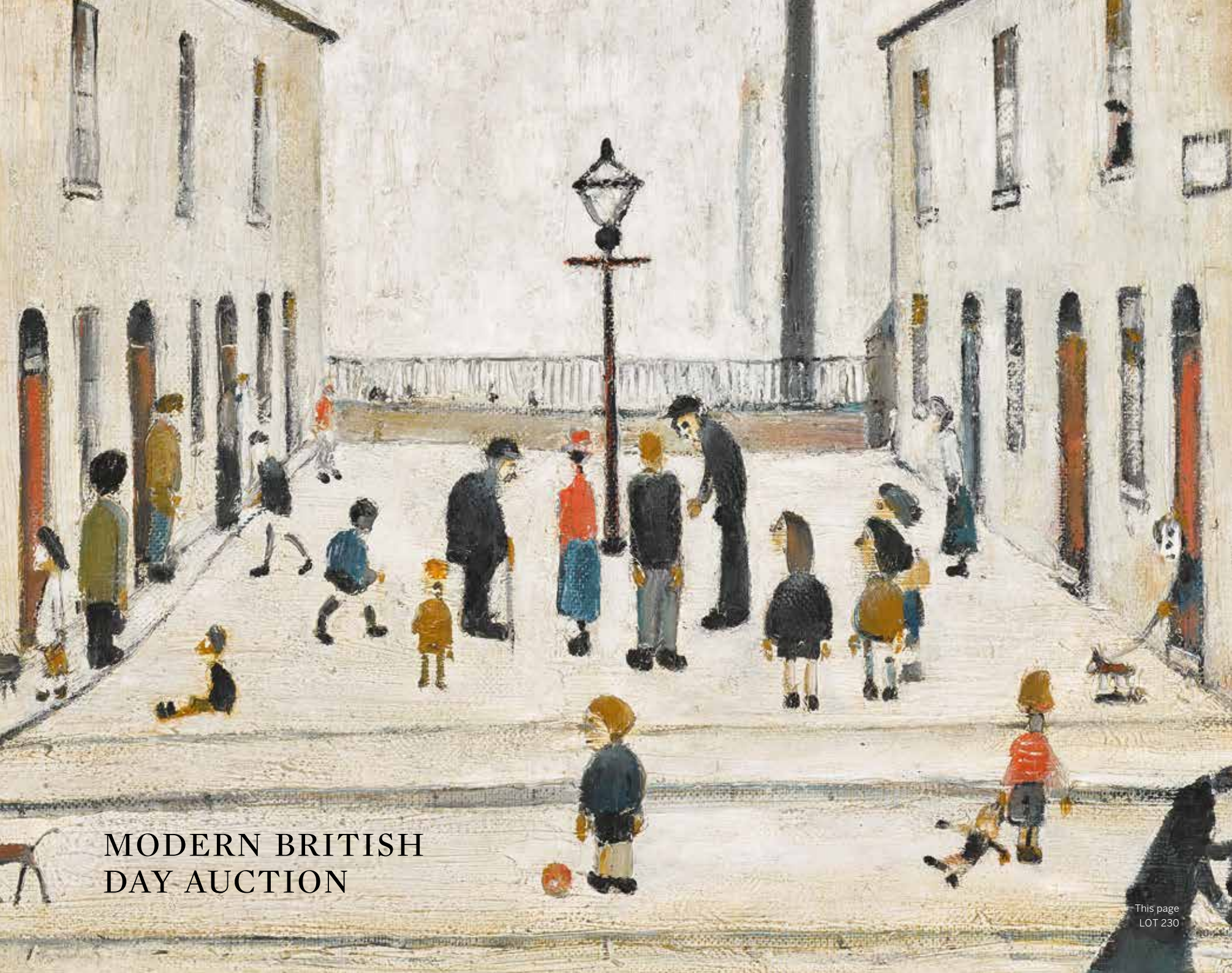
Executed in 2010, this work is from an edition of 3.

#### PROVENANCE

White Cube, London

Acquired from the above by the present owner

£ 300,000-400,000



MODERN BRITISH  
DAY AUCTION



# MODERN BRITISH DAY AUCTION

AUCTION IN LONDON  
30 JUNE 2022  
10 AM

34-35 New Bond Street  
London, W1A 2AA  
+44 (0)20 7293 5000  
sothebys.com  
FOLLOW US @SOTHEBYS  
#SOTHEBYSMODBRIT

ALL EXHIBITIONS FREE  
AND OPEN TO THE PUBLIC

Thursday, 23 June  
9:00 AM - 5:00 PM

Friday, 24 June  
9:00 AM - 5:00 PM

Saturday, 25 June  
12:00 PM - 5:00 PM

Sunday, 26 June  
12:00 PM - 5:00 PM

Monday, 27 June  
9:00 AM - 5:00 PM

Tuesday, 28 June  
9:00 AM - 5:00 PM

Wednesday, 29 June  
9:00 AM - 12:00 PM



## SPECIALISTS

### MODERN BRITISH

Frances Christie  
*Deputy Chairman, Senior Director*  
frances.christie@sothebys.com

Bryn Sayles  
*Director, Head of Sale*  
bryn.sayles@sothebys.com

Charlie Minter  
*Director, Head of Irish Art*  
charlie.minter@sothebys.com

Thomas Podd  
*Deputy Director, Specialist*  
thomas.podd@sothebys.com

Tamsin Golding Yee  
*Associate Specialist*  
Tamsin.goldingyee@sothebys.com

## ENQUIRIES

### SALE NUMBER

L22140

### BIDS DEPARTMENT

+44 (0)20 7293 5283  
fax +44 (0)20 7293 6255  
bids.london@sothebys.com

Telephone bid requests should be received 24 hours prior to the sale. This service is offered for lots with a low estimate of £3,000 and above.

### PRE-SALE CORDINATOR

Beatrice Moller  
Beatrice.moller@sothebys.com  
+44 (0)20 7293 5732

### POST SALE SERVICES

Alison Millar  
Credit Control & Debt Collection  
FOR PAYMENT, DELIVERY  
AND COLLECTION  
+44 (0)20 7293 5220  
FAX +44 (0)20 7293 5910  
ukpostsaleservices@sothebys.com

TO LEARN MORE ABOUT  
THE PROPERTY IN THIS  
SALE, PLEASE VISIT  
**SOTHEBYS.COM/L22140**



201

**BEN NICHOLSON** 1894 - 1982

### King III (Painted Box)

titled (lower centre)  
oil and graphite on wooden box  
height: 6cm.; 2¼in. width: 10cm.; 4in.  
Executed *circa* the 1930s.

⊕ £ 12,000-18,000



202

**BEN NICHOLSON** 1894 - 1982

### CW Courtyard

signed *Nicholson*, titled and dated 73 (on the reverse)  
pencil and wash on paper  
sheet: 40 by 52cm.; 15¾ by 20½in.  
Executed in 1973.

⊕ £ 12,000-18,000



203

PROPERTY FROM A PRIVATE EUROPEAN COLLECTION

**ALFRED WALLIS** 1855 - 1942

### Three Masted Ships and Arched Railway Bridge

pencil, household paint and oil on paper  
unframed: 23 by 30cm.; 9 by 11¾in.

± £ 12,000-18,000



204

PROPERTY FROM A DISTINGUISHED PRIVATE COLLECTION

**HENRY MOORE, R.A.** 1898 - 1986

### Maquette for Reclining Figure No. 1

bronze  
length (excluding base): 20cm.; 8in.; height (excluding base):  
10cm.; 4in.  
Conceived in 1952, this work is from the edition of 9.

⊕ £ 100,000-150,000



205

PROPERTY FROM A DISTINGUISHED BRITISH COLLECTION

**IVON HITCHENS** 1893 - 1979

### Spring Mood

signed *Ivon Hitchens* and dated 33 (lower right)  
oil on canvas  
unframed: 73.5 by 103cm.; 29 by 40½in.  
Executed in 1933.

⊕ £ 25,000-35,000



206

PROPERTY FROM A BRITISH PRIVATE COLLECTION

**CHRISTOPHER WOOD** 1901 - 1930

### White Yacht off the Breton Coast

oil on board  
unframed: 41 by 56.5cm.; 16 by 22¼in.  
Executed in 1929.

£ 120,000-180,000





207

PROPERTY FROM A PRIVATE EUROPEAN COLLECTION

**ALFRED WALLIS** 1855 - 1942

**Four Sailing Boats and Pier Head**

household paint and pencil on card  
unframed: 17.5 by 30cm.; 7 by 11¾in.

£ 10,000-15,000



208

PROPERTY FROM A DISTINGUISHED PRIVATE COLLECTION

**BEN NICHOLSON** 1894 - 1982

**1945 (still life)**

signed *Ben Nicholson* and *NICHOLSON*, titled, dated *1945*, dedicated for *Madge / May 17-45 / from Ben* and inscribed with the artist's address (on the reverse)  
oil and pencil on board, on the artist's prepared backboard  
unframed (inner board): 27 by 38.5cm.; 10¾ by 15¼in.;  
(artist's backboard): 38 by 48.5cm.; 15 by 29in.  
Executed in 1945.

£ 300,000-500,000



209

PROPERTY FROM AN IMPORTANT AMERICAN COLLECTION

**DAME BARBARA HEPWORTH** 1903 - 1975

**Four Figures Waiting**

signed *Barbara Hepworth*, dated 1968, numbered 8/9 and stamped with foundry mark *Morris Singer FOUNDERS/ LONDON* (on the Artist's integral base)  
polished bronze  
height (including Artist's base): 60cm.; 23½in.  
Conceived in 1968, the present work is number 8 from the edition of 9 + 0.

£ 350,000-450,000



210

PROPERTY FROM A DISTINGUISHED PRIVATE COLLECTION

**HENRY MOORE, R.A.** 1898 - 1986

**Seated Girl**

bronze  
height (including base): 22cm.; 8¾in.; width (including base): 19.5cm.; 7¾in.  
Conceived in 1956, the present work is from the edition of 9.

£ 80,000-120,000



211

PROPERTY FROM A DISTINGUISHED PRIVATE COLLECTION

**BEN NICHOLSON** 1894 - 1982

**aug 49**

signed *Ben Nicholson*, titled and inscribed (on the reverse); also signed *Nicholson* and inscribed with the artist's address (on the stretcher bar); further signed *NICHOLSON* and inscribed with the artist's address (on the inside of the frame)  
pencil and oil on curved board, in the artist's wooden frame  
overall: 54 by 47.5cm.; 21¼ by 18¾in.  
Executed in 1949.

£ 200,000-300,000



212

PROPERTY FROM A DISTINGUISHED PRIVATE COLLECTION

**WALTER RICHARD SICKERT, A.R.A.**

1860 - 1942

**The Old Bedford**

signed *Sickert*. (lower right)  
oil on artist's board  
unframed: 39 by 31.5cm.; 15¼ by 14½in.  
Executed 1897-98.

£ 70,000-100,000





213

**MARK GERTLER** 1891 - 1939

### Portrait of the Artist's Brother

signed *Mark Gertler* and dated - 1912 - (lower left)  
pencil, pastel and crayon on paper  
unframed (window): 26 by 18.5cm.; 10¼ by 7¼in.  
Executed in 1912.

£ 30,000-50,000



214

**VANESSA BELL** 1879 - 1961

### Portrait of Virginia Woolf

watercolour, gouache and pencil on paper  
unframed: 24.5 by 30.5cm.; 9¾ by 12¼in.  
Executed *circa* 1950s.

⊕ £ 15,000-25,000



215

**AUGUSTUS JOHN, R.A.** 1878 - 1961

### Lady Ottoline Morrell

signed twice *John* (lower right)  
gouache and pencil on paper  
unframed (sheet): 36 by 29cm.; 14¼ by 11½in.  
Executed *circa* 1908.

⊕ £ 20,000-30,000



216

PROPERTY FROM A DISTINGUISHED PRIVATE COLLECTION

**WALTER RICHARD SICKERT, A.R.A.**

1860 - 1942

### Mornington Crescent Nude

signed *Sickert*. (lower left)  
oil on canvas  
unframed: 50.5 by 41cm.; 20 by 16in.  
Executed *circa* 1907.

£ 70,000-100,000



217

PROPERTY FROM A DISTINGUISHED PRIVATE COLLECTION

**DAME ELISABETH FRINK, R.A.** 1930 - 1993

### Horse in the Rain

signed *Frink* and numbered 7/9 (on the underside)  
bronze  
height: 13cm.; 5¼in.; width: 23.5cm.; 9¼in.  
Conceived in 1976, the present work is number 7 from the edition of 9.

⊕ £ 30,000-50,000



218

**AUGUSTUS JOHN, R.A.** 1878 - 1961

### Dorelia

signed *John* (lower right)  
pencil on paper  
unframed: 34 by 25.5cm.; 13½ by 10in.  
Executed *circa* 1908.

⊕ £ 25,000-35,000





219

PROPERTY FROM A DISTINGUISHED PRIVATE COLLECTION

**DAME ELISABETH FRINK, R.A.** 1930 - 1993

Horseman

signed *Frink* and numbered 1/9 (on the base)

bronze

height (including bronze base) : 42cm.; 16½in.; width (including bronze base): 41cm.; 16in.

Conceived in 1979, the present work is number 1 from the edition of 9.

⊕ £ 70,000-100,000



220

**WYNDHAM LEWIS** 1882 - 1957

Portrait of a Woman

signed *Wyndham Lewis.* and dated 1936. (lower right)

pencil and watercolour on paper

unframed (window): 47 by 27cm.; 18½ by 10¾in.; unframed (sheet): 56 by 37cm.; 22 by 14¾in.

Executed in 1936.

⊕ £ 8,000-12,000



221

**SIR STANLEY SPENCER, R.A.** 1891 - 1959

G & I. Oranges & Lemons

signed *Stanley* and dated 1944 (lower right); numbered 2/44 (upper right)

pencil on paper, squared for transfer

unframed: 40.5 by 29cm.; 16 by 11½in.

Executed in 1944.

⊕ £ 10,000-15,000



222

**GERALD LESLIE BROCKHURST, R.A.**

1890-1978

Vanity

signed *G. L. Brockhurst* and dated 1915 (lower right)

tempera on panel

unframed: 71 by 50.5cm.; 28 by 19 ¾in.

Executed in 1915.

‡ ⊕ £ 40,000-60,000



223

**GERALD LESLIE BROCKHURST, R.A.**

1890-1978

Study for Vanity

signed *G. L. Brockhurst.* (lower right)

pencil on paper, squared for transfer

unframed: 55 by 39.5cm.; 21½ by 15½in.

Executed in 1915.

‡ ⊕ £ 1,500-2,000



224

**GWEN JOHN** 1876 - 1939

Mère Poussepin

oil on canvas

unframed: 61 by 38cm.; 24 by 15in.

Executed probably in the late 1910s.

£ 100,000-150,000





225

**PHILIP WILSON STEER** 1860 - 1942

Miss Rose Pettigrew (in Blue Dress Seated)

oil on canvas  
unframed: 68.5 by 81.5cm.; 27 by 32in.  
Executed in 1895.

£ 30,000-50,000



226

**CHRISTOPHER RICHARD WYNNE  
NEVINSON, A.R.A.** 1889 - 1946

Survivors at Arras

signed *C.R.W. Nevinson.* and dated 1917 (lower right)  
oil on canvas  
unframed: 61 by 51cm.; 24 by 20in.  
Executed in 1917.

£ 80,000-120,000



227

**AUGUSTUS JOHN, RA** 1878 - 1961

Dorelia Among the Pines

signed *John* (lower centre)  
oil and pencil on board  
unframed: 51 by 31cm.; 20 by 12¼in.  
Executed circa 1910-1912.

⊕ £ 20,000-30,000



228

PROPERTY OF A PRIVATE COLLECTION

**SIR JOHN LAVERY, R.A., R.S.A., R.H.A.**

1856 - 1941

Central Park, New York, Evening

signed *J. Lavery* (lower left); also signed *John Lavery*, titled,  
dated 1926 and inscribed *New York* (on the reverse)  
oil on canvas  
unframed: 76.5 by 63.5cm.; 30 by 25in.  
Executed in 1926.

‡ £ 100,000-150,000



229 No Lot



230

PROPERTY FROM A PRIVATE COLLECTION, LONDON

**LAURENCE STEPHEN LOWRY, R.A.**

1887- 1976

A Street in Salford

signed *L. S. LOWRY* and dated 1958 (lower left)  
oil on canvas  
unframed: 35.5 by 46cm.; 14 by 18in.  
Executed in 1958.

⊕ £ 400,000-600,000





231

PROPERTY FROM A DISTINGUISHED PRIVATE COLLECTION

**LAURENCE STEPHEN LOWRY, R.A.**

1887 - 1976

Head of a Man

signed *L.S. LOWRY* and dated 1965 (lower left)

oil on canvas

unframed: 51 by 76cm.; 20 by 30in.

Executed in 1965.

⊕ £ 200,000-300,000



232

PROPERTY FROM A DISTINGUISHED PRIVATE COLLECTION

**DAME ELISABETH FRINK, R.A.**

1930 - 1993

Small Dog

signed *Frink* and numbered 9/10 (on the base)

bronze

height (including bronze base): 23.5cm.; 9¼in.; width

(including bronze base): 29.5cm.; 11¾in.

Conceived in 1986, the present work is number 9 from the edition of 10.

⊕ £ 40,000-60,000



233

PROPERTY FROM THE WAKEFIELD FAMILY COLLECTION

**SIR CEDRIC MORRIS**

1889 - 1982

The Schnake Pot

signed *CEDRIC MORRIS* and dated -69 (lower left)

oil on canvas

unframed: 118.5 by 96cm.; 46¾ by 37¾in.

Executed in November 1969.

⊕ £ 70,000-100,000



234

PROPERTY FROM THE WAKEFIELD FAMILY COLLECTION

**SIR CEDRIC MORRIS**

1889 - 1982

Flowers in a Vase, September Diagram

oil on canvas

unframed: 50.5 by 40.5cm.; 20 by 16in.

⊕ £ 30,000-50,000



235

PROPERTY FROM THE WAKEFIELD FAMILY COLLECTION

**SIR CEDRIC MORRIS**

1889 - 1982

Winter Flowers

signed *CEDRIC MORRIS* and indistinctly dated (lower right)

oil on canvas

unframed: 72 by 51cm.; 28¼ by 20in.

Executed in circa 1966.

⊕ £ 30,000-50,000



236

PROPERTY FROM THE WAKEFIELD FAMILY COLLECTION

**SIR CEDRIC MORRIS**

1889 - 1982

Still Life with Tiger Moth

signed *C. MORRIS C.M.* (lower left)

oil on board

unframed: 38.5 by 29.5cm.; 15¼ by 11½in.

⊕ £ 20,000-30,000





237

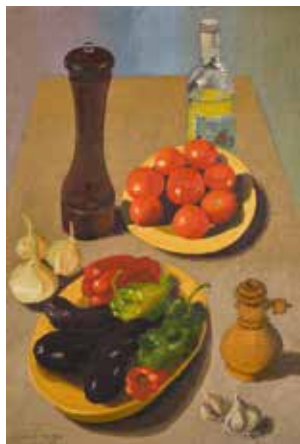
PROPERTY FROM THE WAKEFIELD FAMILY COLLECTION

**SIR CEDRIC MORRIS** 1889 - 1982

Still Life Nasturtiums and Pears

oil on canvas  
unframed: 41 by 66cm.; 16¼ by 26in.  
Executed in 1952.

⊕ £ 15,000-25,000



238

PROPERTY FROM THE WAKEFIELD FAMILY COLLECTION

**SIR CEDRIC MORRIS** 1889 - 1982

Ratatouille

signed *CEDRIC MORRIS* and dated -54 (lower left)  
oil on canvas  
unframed: 76.5 by 50.5cm.; 30¼ by 20in.  
Executed in 1954.

⊕ £ 30,000-50,000



239

PROPERTY FROM THE WAKEFIELD FAMILY COLLECTION

**ELIOT HODGKIN** 1905 - 1987

Seven Pears in a Bowl

signed *Eliot Hodgkin* and dated 7 IX 65 (upper right)  
oil on canvas laid on board  
unframed: 18.5 by 29.5cm.; 7¼ by 11½in.  
Executed in 1965.

⊕ £ 7,000-10,000



240

PROPERTY FROM A DISTINGUISHED PRIVATE COLLECTION

**GRAHAM SUTHERLAND** 1903 - 1980

The Toad

signed *Sutherland* (upper left)  
oil and pencil on canvas  
unframed: 127 by 102.5cm.; 50 by 40¼in.  
Executed in 1962.

⊕ £ 60,000-80,000



241

**KEITH VAUGHAN** 1912 - 1977

David and Saul

signed *Keith Vaughan* and dated 68 (lower right)  
gouache, watercolour and ink on paper  
unframed (sheet): 46 by 40.5cm.; 18 by 16in.  
Executed in 1968.

⊕ £ 12,000-18,000



242

**GRAHAM SUTHERLAND** 1903 - 1980

Octopus II

signed *Sutherland* and dated 78 (lower right); titled (on the reverse)  
watercolour, wash, oil pastels, ink, pen and ink and pencil on paper  
unframed: 60 by 45.5cm.; 23½ by 18in.  
Executed in 1978.

‡ ⊕ £ 8,000-12,000





243

**GRAHAM SUTHERLAND** 1903 - 1980

Portrait of Kenneth Clark

pencil on paper  
unframed: 33 by 23cm.; 13 by 9in.

⊕ £ 5,000-8,000



246

PROPERTY FROM A DISTINGUISHED PRIVATE COLLECTION

**DAME ELISABETH FRINK, R.A.** 1930 - 1993

Standing Horse

signed *Frink* and dated '82 (lower right)  
pencil on paper  
unframed: 77 by 57cm.; 30¼ by 22½in.  
Executed in 1982.

⊕ £ 7,000-10,000



244

PROPERTY FROM A DISTINGUISHED PRIVATE COLLECTION

**LAURENCE STEPHEN LOWRY, R.A.**

1887 - 1976

Yachts at Lytham

signed *L.S. LOWRY* and dated 1962 (lower left)  
oil on canvas  
unframed: 51 by 61cm.; 20 by 24in.  
Executed in 1962.

⊕ £ 200,000-300,000



247

PROPERTY FROM A DISTINGUISHED PRIVATE COLLECTION

**AUGUSTUS JOHN, R.A.** 1878 - 1961

Begonia

signed *John* (lower left)  
oil on canvas  
unframed: 102 by 76.5cm.; 40 by 30in.  
Executed in 1928.

⊕ £ 8,000-12,000



245

**LAURENCE STEPHEN LOWRY, R.A.**

1887 - 1976

Street Musicians

Signed *L.S. LOWRY.* and dated 1938. (lower right)  
oil on canvas  
unframed: 43.5 by 53.5cm.; 17 by 21in.  
Executed in 1938.

‡ ⊕ £ 600,000-800,000



248

PROPERTY FROM A PRIVATE COLLECTION, LONDON

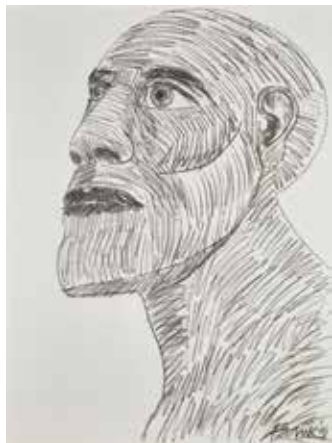
**SIR MATTHEW SMITH** 1879 - 1959

Landscape near Aix

oil on canvas  
unframed: 38.5 by 55cm.; 15 by 21½in.  
Executed circa 1936.

⊕ £ 25,000-35,000





249

PROPERTY FROM A DISTINGUISHED PRIVATE COLLECTION

**DAME ELISABETH FRINK, R.A.** 1930 - 1993

**Head of a Man (Looking Left)**

signed *Frink* and dated '91 (lower right)  
charcoal on paper  
unframed: 76 by 56cm.; 30 by 22in.  
Executed in 1991.

⊕ £ 6,000-8,000



250

PROPERTY FROM A PRIVATE COLLECTION, LONDON

**IVON HITCHENS** 1893 - 1979

**Poppy Against a Blue Sky**

signed *Hitchens* (lower left); also signed by *IVON HITCHENS*,  
titled, dated 1968 and inscribed with the dimensions and  
artist's address (on an artist's label attached to the stretcher)  
oil on canvas  
unframed: 51.5 by 105.5cm.; 20¼ by 41½in.  
Executed in 1968.

⊕ £ 80,000-120,000



251

PROPERTY FROM A DISTINGUISHED PRIVATE COLLECTION

**DAVID BOMBERG** 1890 - 1957

**View in Palestine**

signed *Bomberg* and dated '23 (lower right)  
oil on canvas  
unframed: 41 by 51cm.; 16¼ by 20in.  
Executed in 1923.

⊕ £ 25,000-35,000



252

PROPERTY FROM A DISTINGUISHED PRIVATE COLLECTION

**DAVID BOMBERG** 1890 - 1957

**Study for Ballets Russes Souvenir Programme**

signed with initials *D.B.* (lower right)  
watercolour, gouache, pen, ink and pencil on paper  
unframed: 8 by 6cm.; 3¼ by 2½in.  
Executed in 1919.

⊕ £ 3,000-5,000



253

PROPERTY FROM A DISTINGUISHED PRIVATE COLLECTION

**MARK GERTLER** 1891 - 1939

**Harlequin, Columbine and Pierrot**

signed Mark G. and dated 1918 (upper right)  
oil on canvas  
unframed: 99.5 by 104.5cm.; 39¼ by 41¼in.  
Executed in 1918.

£ 10,000-15,000



254

PROPERTY FROM AN IMPORTANT AMERICAN COLLECTION

**FREDERICK EDWARD MCWILLIAM, R.A.**

1909 - 1992

**Untitled**

signed *MCW* and numbered 1/5 (on the reverse)  
bronze  
43.5 by 13cm.; 17 by 5in.  
Cast in 1971, the present work is number 1 from the edition of 5.

‡ ⊕ W £ 8,000-12,000





255

PROPERTY FROM A PRIVATE COLLECTION, LONDON

**SIR MATTHEW SMITH** 1879-1959

**Women of Algiers (after Eugène Delacroix)**

variously inscribed by the Artist (on the reverse)  
oil on canvasboard  
unframed: 34 by 23cm.; 13½ by 9in.  
Executed *circa* 1936.

⊕ £ 10,000-15,000



256

PROPERTY FROM A PRIVATE COLLECTION, LONDON

**MARY FEDDEN, R.A.** 1915 - 2012

**The Black Umbrella**

signed *Fedden* and indistinctly dated 1965 (lower right)  
oil on canvas  
unframed: 61 by 51cm.; 24 by 20in.  
Executed in 1965.

⊕ £ 25,000-35,000



257

**PETER LANYON** 1918 - 1964

**Untitled (Nude Euston Road School)**

inscribed *P. LANYON* (on canvas overlap); also inscribed *Lanyon/ NUDE/ EUSTON ROAD SCHOOL* (on the stretcher bar)  
oil on canvas  
unframed: 61 by 45.5cm.; 24 by 17¾in.  
Executed in 1939.

⊕ £ 8,000-12,000



258

PROPERTY FROM A DISTINGUISHED PRIVATE COLLECTION

**DAME ELISABETH FRINK, R.A.** 1930 - 1993

**Eagle Trophy**

signed *Frink*, numbered 5/7 and stamped with foundry mark (on the reverse)  
bronze  
height (excluding base): 40.5cm.; 16in.; width (excluding base): 24cm.; 9½in.  
Conceived in 1980, the present work is number 5 from the edition of 7.

⊕ £ 15,000-25,000



259

**TRISTRAM HILLIER, R.A.** 1905-1983

**Notley Abbey, Thame**

signed *Hillier.* and dated 1955. (lower right)  
oil on canvas  
unframed: 61 by 81cm.; 23½ by 81in.  
Executed in 1955.

⊕ £ 8,000-12,000



260

PROPERTY FROM A PRIVATE COLLECTION, LONDON

**IVON HITCHENS** 1893 - 1979

**Reclining Figure**

signed *Hitchens* and dated 47 (lower left); also signed *Ivon Hitchens*, titled *Reclining Figure*, dated 1948 and inscribed *Collection of James Escott Esq.* (on label attached to stretcher)  
oil on canvas  
unframed: 58.5 by 71.5cm.; 23 by 28¼in.  
Executed in 1947.



⊕ £ 40,000-60,000



261

PROPERTY FROM A DISTINGUISHED PRIVATE COLLECTION

**DAME ELISABETH FRINK, R.A.** 1930 - 1993

### Small Boar

signed *Frink* and numbered 7/10 (on the base)  
bronze  
height (including bronze base): 11cm.; 4¼in.; width (including bronze base): 17cm.; 6¾in.  
Conceived in 1971, the present work is number 7 from the edition of 10.

⊕ £ 10,000-15,000



262

**PETER LANYON** 1918 - 1964

### Untitled (Bosigran, Battleship Rock)

inscribed *Peter Lanyon, Bosigran* and dated 1938 (on the reverse)  
oil on canvas  
unframed: 63.5 by 76cm.; 25 by 30in.  
Executed *circa* 1936.

⊕ £ 10,000-15,000



263

**JOHN TUNNARD, A.R.A.** 1900-1971

### Display

signed *Tunnard*, inscribed 57, and dated 66 (lower left)  
oil on board  
unframed: 120.5 by 181.5cm.; 47½ by 71½in.  
Executed in 1966.

⊕ W £ 15,000-25,000



264

PROPERTY FROM AN IMPORTANT AMERICAN COLLECTION

**KENNETH ARMITAGE, R.A.** 1916 - 2002

### People in the Wind (Large Version)

bronze  
height: 65cm.; 25½in.  
Conceived in 1950-1 and cast in 1951 by John Galizia, the present work is from the edition of 6.

‡ ⊕ W £ 60,000-80,000



265

**ALAN DAVIE** 1920 - 2014

### The White Magician

signed *Alan Davie* and dated 1956 (on the reverse)  
oil on board  
unframed: 152 by 244cm.; 60 by 96in.  
Executed in 1956.

⊕ W £ 70,000-100,000



266

PROPERTY FROM THE COLLECTION OF THOMAS C. ADLER

**LYNN CHADWICK, R.A.** 1914 - 2003

### Second Version of Snapping Turtle

welded iron  
height: 82cm.; 32¼in.  
Executed in 1954, the present work is unique.

‡ ⊕ W £ 120,000-180,000





267

PROPERTY FROM THE COLLECTION OF THOMAS C. ADLER

**ALAN DAVIE** 1920 - 2014

**Yum Yum**

signed *Alan Davie*, titled, dated *OCT 61* and inscribed (on the reverse)  
oil on canvas  
unframed: 122 by 101.5cm.; 48 by 40in.  
Executed in 1961.

£ 15,000-25,000



268

**WILLIAM TURNBULL** 1922 - 2012

**Female Figure**

signed with monogram, dated 88, numbered 5/6 and stamped with foundry mark  
bronze  
height: 179cm.; 74 1/2in.; width: 94cm.; 37in.  
Conceived in 1988, the present work is number 5 from the edition of 6.

£ W £ 200,000-300,000



269

PROPERTY FROM A PRIVATE COLLECTION, LONDON

**PATRICK HERON** 1920 - 1999

**Feathery Red in Dull Green : Oct 71**

signed *PATRICK HERON*, titled, dated *Oct 71* and inscribed (on the backboard)  
gouache on paper  
unframed: 18 by 24cm.; 7 by 9 1/2in.  
Executed in 1971.

£ 8,000-12,000



270

PROPERTY FROM A DISTINGUISHED PRIVATE COLLECTION

**REG BUTLER** 1913 - 1981

**Cassandra**

stamped with the Artist's monogram, numbered 5/8 and stamped with foundry stamp (to the bronze base)  
bronze  
height (excluding wooden base): 41.5cm.; 15 3/4in.; width (excluding wooden base): 22cm.; 8 3/4in.  
Conceived in 1961, the present work is number 5 from the edition of 8.

£ 8,000-12,000



271

PROPERTY FROM A PRIVATE COLLECTION, LONDON

**PATRICK HERON** 1920 - 1999

**London Mini with White : April 1970**

signed *PATRICK HERON*, titled, dated *APRIL 1970* and inscribed (on the backboard)  
gouache and pencil on paper  
unframed: 18 by 24cm.; 7 by 9 1/2in.  
Executed in 1970.

£ 8,000-12,000



272

**GERALD LAING** 1936 - 2011

**Galina V**

stamped *GERALD LAING*, signed *Gerald Laing*, titled, dated 1976, numbered 3/10 and inscribed *CR 349* (on the reverse)  
bronze  
height (excluding base): 54cm.; 21 1/2in.; width (excluding base): 41cm.; 16 1/4in.  
Conceived in 1976 and cast in March 1992, the present work is number 3 from the edition of 10.

£ 12,000-18,000





273

PROPERTY FROM A PRIVATE EUROPEAN COLLECTION

**PATRICK CAULFIELD, R.A.** 1936 - 2005

The Well

signed *PATRICK CAULFIELD*, titled and dated 1966 (on the reverse)  
oil on board  
unframed: 122 by 213.5cm.; 48 by 84in.  
Executed in 1966.

⊕ W £ 150,000-250,000



274

**SIR PETER BLAKE, R.A.** B. 1932

Fairies: Night

signed *Peter Blake* (lower right)  
watercolour, pen and ink on paper  
unframed: 35 by 35.5cm.; 13¾ by 14in.  
Executed in 1982.

⊕ £ 25,000-35,000



275

**BRIDGET RILEY** B. 1931

Series 14: Orange, Violet, Green, 2b Dull Green, Dull Orange

signed *Bridget Riley*, dated '70 and dedicated for *Felicity* (centre right); inscribed *Series 14* (lower left); also inscribed with colour notes (upper left)  
gouache and pencil on paper  
unframed: 47.5 by 50.5cm.; 18¾ by 20in.  
Executed in 1970.

⊕ £ 50,000-70,000



276

PROPERTY FROM A DISTINGUISHED LONDON COLLECTION

**EMILY YOUNG** B. 1951

Purbeck Blue Angel

Purbeck blue marble  
height (excluding base): 65cm.; 25½in.; width (excluding base): 69cm.; 27in. depth (excluding base): 98cm.; 38½in.  
Executed circa 2001.

⊕ W £ 250,000-350,000



277

**DAME MAGDALENE ODUNDO** B. 1950

Untitled

signed *Odundo* (on the base)  
terracotta  
height: 26cm.; 10¼in.; diameter: 19cm.; 7½in.  
Executed circa early 1980s.

⊕ £ 40,000-60,000



278

**CALLUM INNES** B. 1962

Exposed Painting Vine Black

signed *Callum Innes* (on canvas overlap); numbered C1 60 02. (on the stretcher bar)  
oil on canvas  
unframed: 95 by 91cm.; 37½ by 35¾in.  
Executed in 2002.

⊕ £ 12,000-18,000





279

**CRAIGIE AITCHISON, R.A.** 1926 - 2009

### Donkey Still Life

oil on canvas  
unframed: 25.5 by 20.5cm.; 10 by 8in.  
Executed in 1999.

£ 30,000-50,000



280

PROPERTY FROM A DISTINGUISHED PRIVATE COLLECTION

**DAME ELISABETH FRINK, R.A.** 1930 - 1993

### Midas Head

signed *Frink* and numbered 7/10 (on the side)  
bronze  
height: 28cm.; 11in.; width: 33cm.; 13in.  
Conceived in 1989, the present work is number 7 from the edition of 10.

£ 30,000-50,000



281

**SIR EDUARDO PAOLOZZI, R.A.** 1924 - 2005

### Richard Rogers as Newton

signed *Eduardo Paolozzi*, dated 1990, numbered 3/6,  
inscribed *FOR RUDI* and stamped with foundry mark (on the base)  
bronze  
height (including base): 41cm.; 16in.; width (including base): 50.5cm.; 20in.

£ 40,000-60,000



282

**JOE TILSON** B. 1928

### Page 4: Snow White & The Black Dwarf

signed *Joe Tilson*, titled, dated 1969 and inscribed (on the reverse)  
oil and silkscreen print on fabric and stained wooden construction  
overall: 95 by 57cm.; 37½ by 22½in.  
Executed in 1969.

£ 40,000-60,000



283

**LYNN CHADWICK, R.A.** 1914-2003

### Conjunction XII

signed with stamp, dated 70, numbered 595 and 6/6 (on the leg)  
bronze  
height: 58cm.; 22¾in.  
Conceived in 1970 and cast by 1973, the present work is number 6 from the edition of 6.

£ W 30,000-50,000



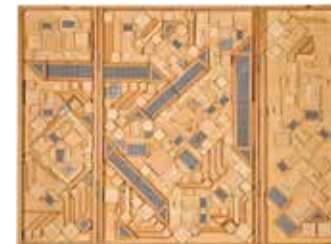
284

**SIR EDUARDO PAOLOZZI, R.A.** 1924 - 2005

### Relief, Triptych

painted wooden relief  
overall: 81 by 108cm.; 31½ by 42½in.

£ W 15,000-25,000





285

**KENNETH ARMITAGE, R.A.** 1916 - 2002

### Model for a Large Work (version B)

patinated and painted bronze  
height: 34.5cm.; 13 1/2in. width: 84cm.; 33in.  
Conceived in 1963 and the present work is number 0 from the edition of 6.

⊕ W £ 25,000-35,000



286

**FRANK AUERBACH** B. 1931

### To the Studios (iii)

signed *Frank Auerbach*, titled "*To the Studios*" and dated 1979+80 (on the reverse)  
felt tip and crayon on paper  
unframed: 29 by 19cm.; 11½ by 7½in.  
Executed in 1979-80.

⊕ £ 10,000-18,000



287

A WAY OF LIFE: THE COLLECTION OF BARBARA & ERNEST KAFKA

**SIR ANTHONY CARO, R.A.** 1924 - 2013

### Table Piece IV

lacquered blue paint over polished steel  
overall: 49.5 by 34.5 by 28cm.; 19½ by 13½ by 11in.  
Executed in 1966.

‡ ⊕ W £ 30,000-50,000



288

**FRANK AUERBACH** B. 1931

### To the Studios (iv)

signed *Frank Auerbach*, titled "*To the Studios*" and dated 1979-80 (on the reverse)  
crayon on paper  
unframed: 29 by 19cm.; 11½ by 7½in.  
Executed in 1979 - 80.

⊕ £ 10,000-18,000



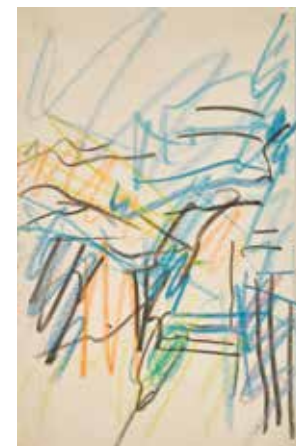
289

**LEON KOSSOFF** 1926 - 2019

### John Lessore

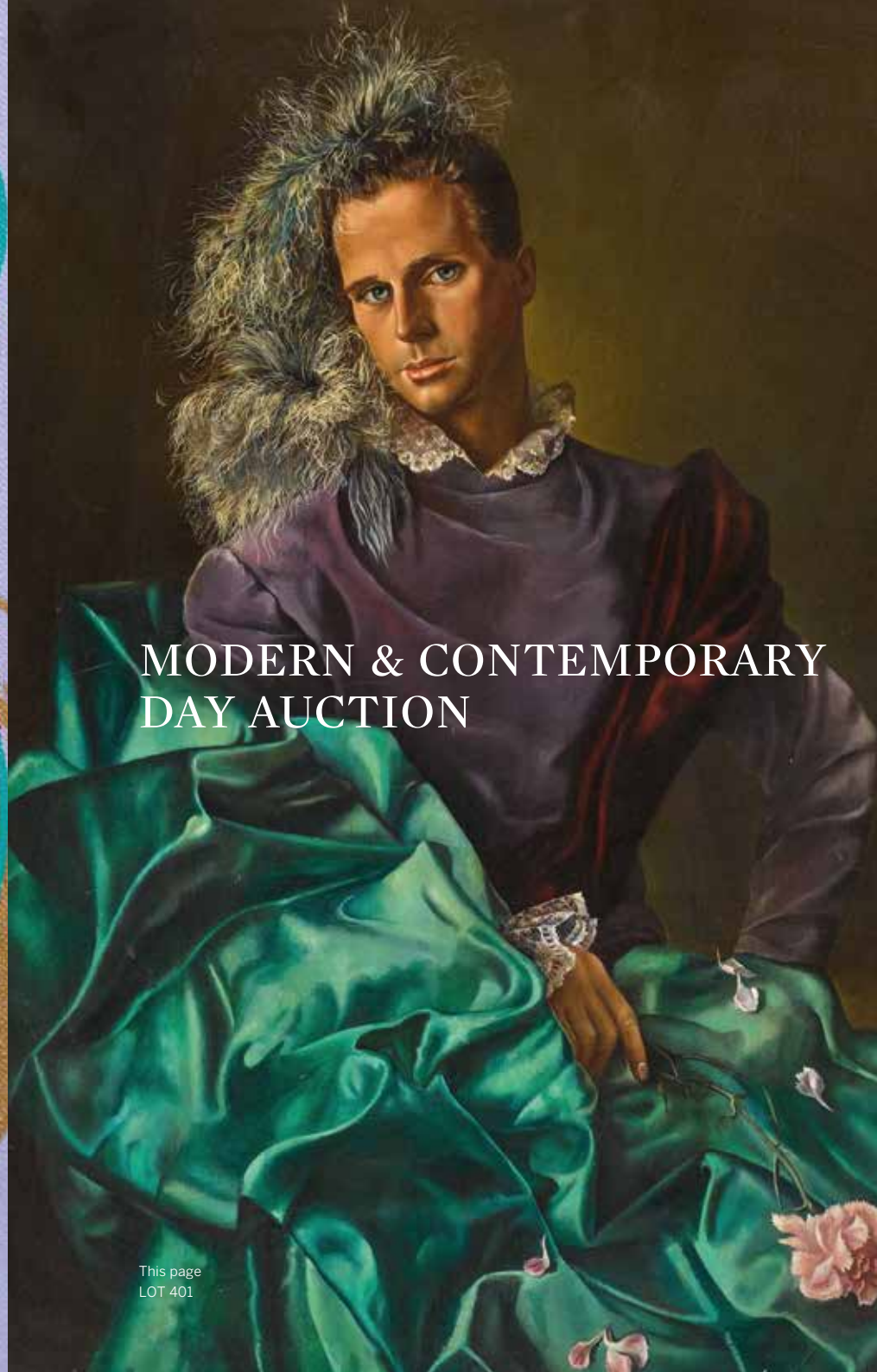
charcoal and chalk on paper  
unframed: 137 by 76cm.; 54¼ by 30in.

‡ ⊕ £ 40,000-60,000





This page  
LOT 340



## MODERN & CONTEMPORARY DAY AUCTION

This page  
LOT 401



This page  
LOT 431

# MODERN & CONTEMPORARY DAY AUCTION

AUCTION IN LONDON  
30 JUNE 2022  
SESSION 1: 12 NOON  
SESSION 2: 2 PM

34-35 New Bond Street  
London, W1A 2AA  
+44 (0)20 7293 5000  
sothebys.com  
FOLLOW US @SOTHEBYS  
#SOTHEBYSMODERN  
#SOTHEBYSCONTEMPORARY

ALL EXHIBITIONS FREE  
AND OPEN TO THE PUBLIC

Thursday, 23 June  
9:00 AM - 5:00 PM

Friday, 24 June  
9:00 AM - 5:00 PM

Saturday, 25 June  
12:00 PM - 5:00 PM

Sunday, 26 June  
12:00 PM - 5:00 PM

Monday, 27 June  
9:00 AM - 5:00 PM

Tuesday, 28 June  
9:00 AM - 5:00 PM

Wednesday, 29 June  
9:00 AM - 12:00 NOON

Sotheby's EST.  
1744

TO LEARN MORE ABOUT  
THE PROPERTY IN THIS  
SALE, PLEASE VISIT  
[SOTHEBYS.COM/L22007](https://www.sothebys.com/L22007)



## SPECIALISTS

### CONTEMPORARY

Antonia Gardner  
*Deputy Director, Specialist*  
*Head of Day Sales*  
antonia.gardner@sothebys.com

Mackie Hayden-Cook  
*Associate Specialist*  
mackie.haydencook@sothebys.com

Aleksandra Ziemiszewska  
*Associate Specialist*  
aleksandra.ziemiszewska@sothebys.com

Francesca Morpurgo  
*Junior Cataloguer*  
francesca.morpurgo@sothebys.com

### MODERN

Holly Braine  
*Director, Specialist*  
*Head of Day Sales*  
holly.braine@sothebys.com

Julia Fischel  
*Deputy Director, Specialist*  
julia.fischel@sothebys.com

Emily Brown  
*Cataloguer*  
emily.brown@sothebys.com

## ENQUIRIES

### SALE NUMBER

L22007

### BIDS DEPARTMENT

+44 (0)20 7293 5283  
fax +44 (0)20 7293 6255  
bids.london@sothebys.com

Telephone bid requests should be received 24 hours prior to the sale. This service is offered for lots with a low estimate of £3,000 and above.

### PRE-SALE COORDINATORS

#### CONTEMPORARY

Edward Hall-Smith  
edward.hallsmith@sothebys.com  
+44 (0)20 7293 5456

#### MODERN

Dominique Bourassa  
dominique.bourassa@sothebys.com  
+44 (0)20 7293 6609

### POST SALE SERVICES

Rebecca Karim  
Credit Control & Debt Collection  
FOR PAYMENT, DELIVERY  
AND COLLECTION  
+44 (0)20 7293 5220  
FAX +44 (0)20 7293 5910  
ukpostsaleservices@sothebys.com

TO LEARN MORE ABOUT  
THE PROPERTY IN THIS  
SALE, PLEASE VISIT  
[SOTHEBYS.COM/L22007](https://www.sothebys.com/L22007)



CONTEMPORARY  
SESSION 1

LONDON  
30 JUNE 2022  
12 NOON  
LOTS 301-390



301

**EWA JUSZKIEWICZ** B. 1984

### Portrait of a Lady

signed and dated 2013 on the reverse  
oil on canvas  
92 by 73 cm. 36¼ by 28¾ in.

£ 80,000-120,000



304

**CHRISTINA QUARLES** B. 1985

### Butt Hidden in Lacy Groves (Hell Must Be a Pretty Place)

signed, titled and dated 2017 on the reverse  
acrylic on canvas  
127 by 101.6 cm. 50 by 40 in.

£ 200,000-300,000



302

**ISSY WOOD** B. 1933

### The Seductress

signed on the reverse  
oil on velvet  
70 by 35 cm. 27½ by 13¾ in.  
Executed in 2017.

£ 70,000-90,000



305

**MADELYNN GREEN** B. 1993

### Living Room

signed twice and dated 2018 twice on the reverse  
oil on paper  
59.3 by 84.1 cm. 23¾ by 33⅛ in.  
framed: 72.8 by 102.4 cm. 28⅝ by 40¼ in.

£ 3,000-4,000



303

**CAROLINE WALKER** B. 1982

### Not Going Out

signed, titled and dated 2017 on the reverse  
oil on paper  
47.3 by 39.7 cm. 18⅝ by 15⅝ in.  
framed: 53.9 by 46.6 cm. 21¼ by 18⅝ in.

£ 18,000-25,000



306

**SHARA HUGHES** B. 1981

### Subtle Signals

signed, titled and dated 2020 on the reverse  
oil and acrylic on canvas  
147.5 by 126.9 cm. 58⅛ by 50 in.

£ 200,000-300,000





307

**STANLEY WHITNEY** B. 1946

Untitled

signed and dated 2007 on the reverse  
oil on canvas  
30.5 by 30.5 cm. 12 by 12 in.

£ 40,000-60,000



308

**JORDY KERWICK** B. 1982

Untitled

oil, acrylic and spray paint on canvas  
160 by 180 cm. 63 by 70 7/8 in.  
Executed in 2020.

£ 40,000-60,000



309

**EDGAR PLANS** B. 1977

Hero

signed and titled; signed and titled on the reverse  
oil, acrylic and oilstick on canvas  
162 by 130 cm. 63 3/4 by 51 1/8 in.  
Executed in 2018.

£ 80,000-120,000



310

**TOM SACHS** B. 1966

Good Bye Brother

titled in Japanese; signed titled and dated 2001 on the reverse  
acrylic on canvas  
183 by 123 cm. 72 by 48 3/8 in.

£ 40,000-60,000



311

**YOSHITOMO NARA** B. 1959

Untitled (Perfect Picture of Bad Health)

titled  
coloured pencil on paper  
29.6 by 23 cm. 11 5/8 by 9 in.  
framed: 39.9 by 32.8 cm. 15 3/4 by 12 7/8 in.  
Executed in 2000.

£ 40,000-60,000



312

**YAYOI KUSAMA** B. 1929

Pumpkin

signed, titled and dated 1990 on the reverse  
acrylic and pencil on canvas  
18 by 14 cm. 7 by 5 1/2 in.  
framed: 36.3 by 32.3 cm. 14 1/4 by 12 3/4 in.

£ 200,000-300,000





313

**CHIHARU SHIOTA** B. 1972

**Trauma/Alltag (Mirror)**

metal frame, mirror and black thread  
75 by 90 by 75 cm. 29½ by 35¾ by 29½ in.  
Executed circa 2010.

W £ 50,000-70,000



314

**JORDY KERWICK** B. 1982

**Untitled**

signed and dated 2020  
oil pastel and felt tip pen on paper  
55 by 75 cm. 21¾ by 29½ in.

± £ 8,000-12,000



315

**AYAKO ROKKAKU** B. 1982

**Untitled AR33**

signed  
acrylic on cardboard  
40.5 by 53.5 cm. 16 by 31 in.  
framed: 61 by 71 cm. 24 by 28 in.  
Executed in 2006.

± £ 25,000-35,000



316

**ISSHAQ ISMAIL** B. 1989

**Untitled Faces VII**

signed; signed, titled and dated 2018 on the reverse  
acrylic on canvas  
101.6 by 76.2 cm. 40 by 30 in.

± £ 25,000-35,000



317

**JORDY KERWICK** B. 1982

**The Flume**

signed, titled and dated 2019 on the reverse  
oil, acrylic, oilstick, enamel and charcoal on canvas  
75 by 60 cm. 29½ by 23¾ in.

± £ 15,000-20,000



318

**YAYOI KUSAMA** B. 1929

**Uchu (Space/Universe)**

signed, titled in Japanese and dated 1994 on the reverse  
acrylic on canvas  
91 by 73 cm. 35¾ by 28¾ in.

± £ 300,000-500,000





319

**DAMIEN HIRST** B. 1965

**Beautiful Architect**

butterflies and household gloss on canvas  
160 by 160 cm. 63 by 63 in.  
Executed in 2003.

⊕ W £ 400,000-600,000



322

**CHRIS OFILI** B. 1968

**Untitled**

each: signed and dated 99 on the reverse  
watercolour and graphite on paper, in two parts  
each: 24 by 15.5 cm. 9½ by 6¼ in.  
each framed: 37.3 by 28.3 cm. 14¾ by 11½ in.

‡ ⊕ £ 12,000-18,000



320

**OLI EPP** B. 1994

**Pringles Duck**

signed on the reverse  
oil and graphite on canvas  
49.7 by 39.5 cm. 19½ by 15½ in.  
Executed in 2016.

⊕ £ 4,000-6,000



323

SOLD ON BEHALF OF BALTIC CENTRE FOR CONTEMPORARY ART

**ANTONY GORMLEY** B. 1950

**Clamp 1 (Meme) IV**

cast iron  
11.9 by 9.5 by 18 cm. 4¾ by 3¾ by 7¼ in.  
Executed in 2018.

⊕ £ 60,000-80,000



321

**DAMIEN HIRST** B. 1965

**Benzoin**

dated 1995 on the inside of the stretcher; signed on the reverse  
household gloss on canvas  
48.4 by 43.3 cm. 19 by 17 in.

‡ ⊕ £ 150,000-200,000



324

**ANTHONY CARO** 1924 - 2013

**Kenner**

painted steel  
60.2 by 106 by 23 cm. 23¾ by 41¾ by 9 in.  
Executed in 1965.

‡ ⊕ W £ 60,000-80,000





325

SOLD TO BENEFIT THE NEW MUSEUM, NEW YORK

**SARAH LUCAS** B. 1962

**Self-Portrait #3**

colour copies collaged on brown paper  
259.3 by 146 cm. 102½ by 57½ in.  
Executed in 1993.

⌘ W £ 100,000-150,000



326

**TRACEY EMIN** B. 1963

**I want you so much**

signed, titled and dated 2015  
fabric and embroidered calico  
162 by 220 cm. 63¾ by 86½ in.  
framed: 183.8 by 238.8 cm. 72¾ by 94 in.

⌘ W £ 200,000-300,000



327

**SONIA BOYCE** B. 1962

**From The Nipple to The Bottle Never Satisfied**

titled; signed and dated 97 on the reverse  
placard on wood  
164.9 by 48.4 cm. 64¾ by 19 in.

⌘ W ⌘ £ 10,000-15,000



328

PROPERTY FROM AN IMPORTANT EUROPEAN COLLECTION

**TRACEY EMIN** B. 1963

**This is exactly how I feel right now**

incised with the artist's initials and numbered  
2/6 on the underside  
bronze  
29 by 129 by 39 cm. 11¾ by 50¾ by 15¾ in.  
Executed in 2016, this work is number 2 from an edition of 6,  
plus 2 artist's proofs.

⌘ W £ 120,000-180,000



329

**ADRIAN GHENIE** B. 1977

**The Butcher**

signed and dated 2009 on the reverse  
oil on canvas  
70.3 by 60.4 cm. 27¾ by 23¾ in.

⌘ £ 400,000-600,000



330

**PETER DOIG** B. 1959

**Paris**

signed, titled and dated '02 on the reverse  
oil and gouache on paper  
72.5 by 57.4 cm. 28½ by 22½ in.  
framed: 96.3 by 81.1 cm. 37¾ by 31¾ in.

⌘ W ⌘ £ 150,000-200,000





○ 331

**HOWARD HODGKIN** 1932 - 2017

**Bonfire**

signed, titled twice and dated 2016 twice on the reverse  
oil on wood  
31.1 by 36.2 cm. 12¼ by 14¼ in.

£ 50,000-70,000



334

**MARLENE DUMAS** B. 1953

**Don't Ask - Don't Tell**

signed, dated 2001 and variously inscribed on the reverse  
oil on canvas  
80 by 69.9 cm. 31½ by 27½ in.

£ 300,000-400,000



332

PROPERTY FROM A PRIVATE EUROPEAN COLLECTION

**CECILY BROWN** B. 1969

**Untitled #40**

signed twice and dated 2007 on the stretcher  
oil on canvas  
31.8 by 43.2 cm. 12½ by 17 in.

£ 220,000-280,000



335

**HARLAND MILLER** B. 1964

**Hell...The Kind Of Nightmare You Only Dream Of 9**

signed and dated 2017 on the reverse  
oil on canvas  
239 by 157.5 cm. 94½ by 62 in.

W £ 80,000-120,000



333

**ELIZABETH PEYTON** B. 1965

**Tony Just**

signed, titled and dated 2000 on the reverse  
watercolour on paper  
31.1 by 22.8 cm. 12¼ by 9 in.  
framed: 45.7 by 40 cm. 18 by 15¾ in.

£ 40,000-60,000



□ 336

**GILBERT AND GEORGE** B. 1943 AND B. 1942

**Fuck All Nazi's**

signed, titled twice and dated 1998  
mixed media in artists' frames, in 12 parts  
each: 63.5 by 75.5 cm. 25 by 29¾ in.  
overall: 190 by 301.9 cm. 74¾ by 118¾ in.

W £ 40,000-60,000





337

**ED RUSCHA** B. 1937

**He Loafs All Day**

signed and dated 2010  
acrylic and dry pigment on paper  
57 by 76.4 cm. 22½ by 30⅞ in.  
framed: 62.2 by 81.6 cm. 24½ by 32⅞ in.

£ 160,000-250,000



338

**GEORGE CONDO** B. 1957

**Female Portrait**

signed and dated 07 on the reverse  
oil on canvas  
40.5 by 30.5 cm. 16 by 12 in.  
framed: 43.3 by 33.2 cm. 17 by 13⅛ in.

£ 200,000-300,000



339

**DANH VÕ** B. 1975

**Untitled (Flag)**

gold leaf on cardboard  
47 by 76 cm. 18½ by 29⅞ in.  
framed: 55.1 by 82.1 cm. 21¾ by 32¾ in.  
Executed in 2010.

£ 120,000-180,000



340

**ANDY WARHOL** 1928 - 1987

**Dollar Sign**

signed, dated 81 and dedicated to *Lord Jo* on the overlap  
acrylic and silkscreen ink on canvas  
25.6 by 20.6 cm. 10⅞ by 8⅞ in.  
framed: 31.9 by 26.3 cm. 12½ by 10⅝ in.

£ 300,000-500,000



341

**JASPER JOHNS** B. 1930

**0 Through 9, from Lead Reliefs**

incised with the artist's signature, dated '70  
and numbered 25/60  
embossed lead relief, in artist's frame  
79 by 60 cm. 31⅞ by 23⅞ in.  
Executed in 1970, this work is number 25 from an edition of  
60, plus 8 artist's proofs.

£ 50,000-70,000



342

**GEORGE CONDO** B. 1957

**Untitled**

signed, dated *Barcelona Nov. 20, 1992* and dedicated *Para Carmen with Memories of Great Exhibition*  
pastel on paper  
65 by 50 cm. 25⅞ by 19¾ in.  
framed: 88.2 by 72.8 cm. 34¾ by 28⅞ in.

£ 100,000-150,000





343

**GEORGE CONDO** B. 1957

Untitled

signed, dated *Barcelona 1992* and dedicated *Para Carmen*  
pastel on paper  
65 by 50 cm. 25 $\frac{5}{8}$  by 19 $\frac{3}{4}$  in.  
framed: 86.3 by 72.8 cm. 34 by 28 $\frac{5}{8}$  in.

± £ 100,000-150,000



344

**SALMAN TOOR** B. 1983

Decent Couple

signed and dated '12 on the reverse  
oil and graphite on canvas  
50.8 by 50.4 cm. 20 by 19 $\frac{7}{8}$  in.

£ 60,000-80,000



345

**LOUIS FRATINO** B. 1993

Jamie's Room

pastel on paper  
41.9 by 27.9 cm. 16 $\frac{1}{2}$  by 11 in.  
framed: 46.5 by 33.2 cm. 18 $\frac{1}{4}$  by 13 $\frac{1}{8}$  in.  
Executed in 2019.

± £ 20,000-30,000



346

**OMAR RODRIGUEZ-GRAHAM** B. 1978

Colisión entre Culturas

oil and acrylic on linen laid down on wood  
180 by 162 cm. 70 $\frac{7}{8}$  by 63 $\frac{3}{4}$  in.  
Executed in 2020.

± W £ 10,000-15,000



347

**ABOUDIA** B. 1983

Nouchi Child in Blue

signed  
mixed media and paper collage on canvas  
91.3 by 91.3 cm. 36 by 36 in.  
Executed in 2021.

± £ 28,000-35,000



348

**GODWIN CHAMPS NAMUYIMBA** B. 1989

Home Saloon 2

signed, titled and dated 2021 on the reverse  
oil on canvas  
196 by 141.5 cm. 77 $\frac{1}{8}$  by 55 $\frac{3}{4}$  in.

W £ 20,000-30,000





349

**THIERRY NOIR** B. 1958

Meeting Point

signed; signed, titled, dated *March 24, 2016* and variously inscribed on the overlap

acrylic on canvas

150.5 by 110 cm. 59¼ by 43¼ in.

⊕ W £ 15,000-20,000



350

**ISSHAQ ISMAIL** B. 1989

Onipa 3

incised with the artist's signature

acrylic and oil on canvas

150.6 by 125.8 cm. 59¼ by 49½ in.

Executed in 2021.

W £ 20,000-30,000



351

**ZANELE MUHOLI** B. 1972

Sebenzile

acrylic, beads and woodcut on board

89.5 by 59.5 cm. 35¼ by 23¾ in.

Executed in 2020.

£ 10,000-15,000



352

**GODWIN CHAMPS** B. 1989

Criminal Minds

signed, titled and dated *2021* on the reverse

oil and acrylic on denim

151.2 by 124.5 cm. 59½ by 49 in.

‡ W £ 20,000-30,000



353

**EDGAR PLANS** B. 1977

Sun Lorenzo

signed, titled and dated *Gijon July 07*

oil on canvas

120 by 180 cm. 47¼ by 70⅞ in.

‡ ⊕ W £ 25,000-35,000



354

**ALBERT WILLEM** B. 1979

Party Times 2

signed, titled and dated *2020* on the reverse

acrylic on linen

150 by 110 cm. 59 by 43¼ in.

‡ ⊕ £ 10,000-15,000





355

**ABOUDIA** B. 1983

La Reunion

signed  
acrylic, oilstick, cardboard and printed paper collage on  
canvas, in artist's frame  
149.2 by 180 cm. 58¾ by 70⅞ in.  
Executed in 2021.

± W £ 30,000-40,000



356

**ANDRÉ BUTZER** B. 1973

Portrait N-Ford und H-Ford (Henry)

signed; signed, dated '05 and variously inscribed on the  
reverse  
oil and spray paint on canvas  
249.8 by 199.8 cm. 98¾ by 78⅞ in.

± ⊕ W £ 100,000-150,000



357

**JANA EULER** B. 1982

Painting Out of Focus of Greece Leaving  
Europe

signed, titled and dated 2012 on the overlap  
oil on canvas  
180 by 140 cm. 70⅞ by 55⅞ in.

± ⊕ W £ 35,000-45,000



358

**GÜNTHER FÖRG** 1952 - 2013

Untitled

signed and dated 05  
acrylic on canvas  
150.7 by 130 cm. 59⅞ by 51⅞ in.

± ⊕ W £ 200,000-300,000



359

**FRANZ WEST** 1947 - 2012

Untitled

papier mâché, plaster, gauze, acrylic, lacquer, metal and  
plastic pipes on wooden base  
overall: 263 by 225 by 162 cm. 103½ by 88⅞ by 64¾ in.  
Executed in 2002.

± ⊕ W £ 200,000-300,000



360

**SIGMAR POLKE** 1941 - 2010

Untitled

signed and dated 1996 on the reverse  
acrylic and interference colour on canvas  
90 by 110 cm. 35⅞ by 43¼ in.

± ⊕ W £ 100,000-150,000





○ 361

**GEORG BASELITZ** B. 1938

Willem I

signed, titled and dated 18 on the reverse  
oil on canvas  
124.2 by 100 cm. 48 $\frac{7}{8}$  by 39 $\frac{1}{4}$  in.

£ 300,000-400,000



○ 364

**GÜNTHER FÖRG** 1952 - 2013

Ohne Titel

signed; signed and dated 2000 on the reverse  
acrylic on canvas  
200 by 219 cm. 78 $\frac{3}{4}$  by 86 $\frac{1}{4}$  in.

W 150,000-200,000



362

**FRANZ WEST** 1947 - 2012

Cool Book

lacquer on aluminium  
57.2 by 222 by 235 cm. 22 $\frac{1}{2}$  by 87 $\frac{3}{8}$  by 92 $\frac{1}{2}$  in.  
Executed in 2007.

W 200,000-300,000



○ 365

PROPERTY FROM A EUROPEAN COLLECTION

**LUCIO FONTANA** 1899 - 1968

Concetto Spaziale, Attesa

signed, titled and inscribed *Buon Viaggio e / buon fine* on the reverse  
waterpaint on canvas  
61.1 by 50.1 cm. 24 by 19 $\frac{3}{4}$  in.  
Executed in 1967.

£ 400,000-600,000



363

**GERHARD RICHTER** B. 1932

Strip (3168)

signed and numbered 3168 on the backing board  
digital print mounted on Alu-Dibond, in artist's frame  
overall: 53 by 105.1 cm. 20 $\frac{7}{8}$  by 41 $\frac{3}{8}$  in

£ 40,000-60,000



○ 366

**LUCIO FONTANA** 1899 - 1968

Concetto Spaziale

incised with the artist's signature on the underside  
painted and glazed ceramic  
21.1 by 50 by 21.6 cm. 8 $\frac{1}{4}$  by 19 $\frac{3}{4}$  by 8 $\frac{1}{2}$  in.  
Executed in 1964-66.

W 100,000-150,000





367

**IGOR MITORAJ** 1944 - 2014

### Testa Iberica

incised with the artist's signature and stamped with the foundry mark towards the base

bronze

overall: 183.3 by 188 by 139 cm. 72 $\frac{1}{8}$  by 74 by 54 $\frac{3}{4}$  in.

Executed in 1989, this work is from an edition of 6.

£ 50,000-70,000



368

**JEAN DUBUFFET** 1901 - 1985

### La vie secrète

signed and dated 52; signed, titled and dated 1952 on the reverse

oil on board

64.7 by 80.6 cm. 25 $\frac{1}{2}$  by 31 $\frac{3}{4}$  in.

framed: 75 by 91 cm. 29 $\frac{1}{2}$  by 35 $\frac{7}{8}$  in.

£ 150,000-200,000



369

**JEAN FAUTRIER** 1898 - 1964

### Lignes

signed and dated 63

oil on paper laid down on canvas

33 by 46 cm. 12 by 18 $\frac{1}{4}$  in.

framed: 43 by 56 cm. 16 $\frac{7}{8}$  by 22 in.

£ 50,000-70,000



370

**SERGE POLIAKOFF** 1900 - 1969

### Composition rouge et bleue

signed

oil on canvas

81 by 65 cm. 31 $\frac{7}{8}$  by 25 $\frac{5}{8}$  in.

framed: 102.5 by 86.5 cm. 40 $\frac{3}{8}$  by 34 in.

Executed in 1968.

£ 90,000-120,000



371

**GEORGES MATHIEU** 1921 - 2012

### Ubaye

signed and dated 69

oil on canvas

60.5 by 73 cm. 23 $\frac{7}{8}$  by 28 $\frac{3}{4}$  in.

framed: 62.5 by 75.5 cm. 24 $\frac{5}{8}$  by 29 $\frac{3}{4}$  in.

£ 50,000-70,000



372

**WOLS** 1913 - 1951

### Fantastic Landscape

signed

ink, watercolour and gouache on paper mounted on paper

27.2 by 32.4 cm. 10 $\frac{3}{4}$  by 12 $\frac{3}{4}$  in.

framed: 56.8 by 60.3 cm. 22 $\frac{3}{8}$  by 23 $\frac{3}{4}$  in.

Executed in 1941-42.

£ 10,000-15,000





373

**EDDIE MARTINEZ** B. 1977

Study No. 7

signed with the artist's initials and dated 19  
felt tip pen, pen, acrylic and wax crayon on paper  
15.5 by 21 cm. 6¼ by 8¼ in.  
framed: 21.5 by 28.1 cm. 8½ by 11 in.

£ 3,000-4,000



376

**EDDIE MARTINEZ** B. 1977

Untitled

signed and dated 18  
pen, marker, watercolour, coloured pencil, debris and Wite-  
Out on paper  
22.9 by 21.6 cm. 9 by 8½ in.

£ 3,000-4,000



374

**OSCAR MURILLO** B. 1986

Untitled

signed and dated 12 on the overlap  
oil, oilstick, tape and dirt on canvas  
188.5 by 157.8 cm. 74¼ by 62½ in.

± W £ 70,000-90,000



377

IMPORTANT BANKSY PRINTS FROM A PRIVATE AMERICAN COLLECTION

**BANKSY** B. 1974

Stop and Search

signed, stamped with the publisher's blindstamp and  
numbered 334/500  
screenprint on paper  
76.5 by 57.6 cm. 30¼ by 22¾ in.  
Executed in 2007, this work is number 334 from an edition  
of 500.

± ⊕ £ 40,000-60,000



375

**ETHAN COOK** B. 1983

Untitled

signed with the artist's initials and dated 2013 on the  
stretcher  
handwoven cotton canvas, in artist's frame  
77.4 by 62.1 cm. 30½ by 24½ in.

£ 2,000-3,000



378

IMPORTANT BANKSY PRINTS FROM A PRIVATE AMERICAN COLLECTION

**BANKSY** B. 1974

Girl With Balloon - Colour AP (Dark Pink)

signed, stamped with the publisher's blindstamp and  
numbered AP 26  
screenprint on paper  
69.7 by 49.9 cm. 27¾ by 19¾ in.  
Executed in 2004, this work is number 26, one of 88 artist's  
proofs printed in various colour combinations.

± ⊕ £ 250,000-450,000





379

IMPORTANT BANKSY PRINTS FROM A PRIVATE AMERICAN COLLECTION

**BANKSY** B. 1974

Nola AP (Green Rain)

signed and numbered AP/05  
screenprint on paper  
76.2 by 55.9 cm. 30 by 22 in.  
Executed in 2008, this work is number 5, one of 66 artist's  
proofs printed in various colour combinations.

£ 120,000-180,000



380

IMPORTANT BANKSY PRINTS FROM A PRIVATE AMERICAN COLLECTION

**BANKSY** B. 1974

Napalm

signed, dated and numbered 13/500  
screenprint on paper  
50 by 70 cm. 19¾ by 27½ in.  
Executed in 2004, this work is number 13 from an edition of  
500.

£ 18,000-22,000



381

IMPORTANT BANKSY PRINTS FROM A PRIVATE AMERICAN COLLECTION

**BANKSY** B. 1974

Nola

signed, stamped with the publisher's blindstamp and  
numbered 94/289  
screenprint on paper  
75.5 by 54.7 cm. 29¾ by 21½ in.  
Executed in 2008, this work is number 94 from an edition  
of 289.

£ 70,000-90,000



382

IMPORTANT BANKSY PRINTS FROM A PRIVATE AMERICAN COLLECTION

**BANKSY** B. 1974

Girl with Balloon

stamped with the publisher's blindstamp and numbered 391/600  
screenprint on paper  
70 by 50 cm. 27½ by 19¾ in.  
Executed in 2004, this work is number 391 from an edition of  
600.

£ 80,000-120,000



383

**JOSEPH KOSUTH** B. 1945

Art as Idea as Idea, Definition Piece

mounted photograph  
145 by 145 cm. 57½ by 57½ in.  
Executed in 1966-68.

£ 40,000-60,000



384

**THOMAS STRUTH** B. 1954

Iglesia de San Francisco, Lima / Peru

signed on a label affixed to the reverse  
c-print, in artist's frame  
182.8 by 238.6 cm. 72 by 94 in.  
Executed in 2003, this work is number 9 from an edition of 10.

W £ 40,000-60,000





385

**MALCOLM MORLEY** 1931 - 2018

**The Flying Dutchman**

signed and dated 1989  
oil, acrylic, wax and collage on board, in artist's frame  
141.3 by 105.4 cm. 55½ by 41½ in.

⊕ £ 50,000-70,000



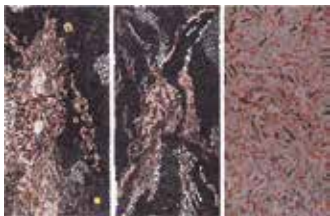
386

**PAUL THEK** 1933 - 1988

**Fireflies**

embossed with the title on label affixed to the frame; signed,  
titled and dated 8.27.79 on the reverse  
oil on canvas in artist's frame and picture light  
overall: 34.8 by 44.1 by 17.8 cm. 13¾ by 17¾ by 7 in.

‡ £ 25,000-35,000



○ 387

**BHARTI KHER** B. 1969

**Itch, Scratch, Raw**

i,ii. bindis on aluminium composite panel  
iii. bindis on painted aluminium composite panel  
each: 243 by 120.8 cm. 95½ by 47½ in.  
each framed: 248.5 by 126.2 cm. 97¾ by 49¾ in.  
Executed in 2006.

‡ ⊕ W £ 80,000-120,000



388

**JUAN GENOVÉS** 1930 - 2020

**Corro**

signed, titled and dated 2014 on the reverse  
mixed media on cardboard, in artist's frame  
67.3 by 97.2 cm. 26½ by 38¼ in.

‡ ⊕ £ 40,000-60,000



389

**RICHARD LONG** B. 1945

**Slate Mud**

signed, titled, dated 1988 and stamped  
slate mud and graphite on paper board  
101.7 by 134.9 cm. 40 by 53½ in.

† ⊕ £ 10,000-15,000



390

**DAMIEN HIRST** B. 1965

**4554 Put Down the Dead, From The Currency**

signed, titled and dated 2016 on the reverse with the artist's  
blindstamp, microdot, hallmark and hologram  
enamel paint on handmade paper  
21.3 by 29.8 cm. 8¾ by 11¾ in.  
framed: 39.2 by 47.3 cm. 15¾ by 18¾ in.

⊕ £ 8,000-12,000





## MODERN SESSION II

LONDON  
30 JUNE 2022  
2 PM  
LOTS 401-510



401

PROPERTY OF A PRIVATE EUROPEAN COLLECTOR

**LEONOR FINI** 1907 - 1996

Portrait de Lino Invernizzi

oil on canvas  
76 by 56.5cm., 29 $\frac{7}{8}$  by 22 $\frac{1}{4}$ in.  
Painted in 1944-45.

£ 120,000-180,000



402

**SALVADOR DALÍ** 1904 - 1989

Les fleurs-lèvres

signed *Dalí* and dated 1967 (lower right)  
gouache, watercolour and felt-tip pen on paper  
56.2 by 38.5cm., 22 $\frac{1}{8}$  by 15 $\frac{1}{8}$ in.  
Executed in 1967.

£ 60,000-80,000



403

PROPERTY FROM AN IMPORTANT PRIVATE COLLECTION

**PABLO PICASSO** 1881 - 1973

Nu couché

signed *Picasso*, dated 5.9.69. and numbered IV (upper right)  
pencil on paper  
50.5 by 65.5cm., 19 $\frac{7}{8}$  by 25 $\frac{3}{4}$ in.  
Drawn in Mougins on 5th September 1969.

£ 200,000-300,000



404

**PABLO PICASSO** 1881 - 1973

Nu assis et amour

signed *Picasso* and dated 16.12.68.V (upper left)  
pen and brush and ink on paper  
44 by 31.5cm., 17 $\frac{1}{4}$  by 12 $\frac{3}{8}$ in.  
Executed on 16th December 1968.

£ 100,000-150,000



405

PROPERTY FROM THE NINA MILLER COLLECTION

**PABLO PICASSO** 1881 - 1973

Deux femmes nues

dated 16.3.56 (upper right); signed *Picasso* on the reverse  
painted terracotta tile  
20.4 by 20.4cm., 8 by 8in.  
Executed on 16th March 1956; this work is unique.

£ 40,000-60,000



406

BY LAND AND BY SEA: THE COLLECTION OF PAUL YEOU CHICHONG

**RAOUL DUFY** 1877 - 1953

Régates à Fécamp

watercolour and black chalk on paper - recto  
black chalk on paper - verso  
23 by 34.8cm., 9 by 13 $\frac{3}{8}$ in.  
Executed circa 1902.

£ 40,000-60,000





407

**MARC CHAGALL** 1887 - 1985

Les mariés au-dessus du village

stamped *Chagall* (lower left)  
oil, tempera and brush and ink on canvasboard  
23.9 by 32.9cm., 9 $\frac{3}{8}$  by 12 $\frac{7}{8}$ in.  
Executed *circa* 1980.

£ 150,000-200,000



410

**MARC CHAGALL** 1887 - 1985

Deux vases de fleurs

signed *MArc Chagall* (lower right)  
gouache, watercolour, coloured pencil and pastel on paper  
61 by 80.2cm., 24 by 31 $\frac{5}{8}$ in.  
Executed in 1981.

£ 200,000-300,000



408

THE SKY'S THE LIMIT: PROPERTY FROM AN IMPORTANT BELGIAN COLLECTION

**RENÉ MAGRITTE** 1898 - 1967

Galatée

signed *Magritte* (lower right); signed *Magritte*, titled and dated 1952 on the reverse  
oil on canvas  
50.5 by 70.5cm., 19 $\frac{7}{8}$  by 27 $\frac{3}{4}$ in.  
Painted in 1964.

£ 800,000-1,200,000



411

PROPERTY FROM A SWISS PRIVATE COLLECTION

**PIERRE-AUGUSTE RENOIR** 1841 - 1919

Paysage de l'Estaque

signed *Renoir* (lower left)  
oil on canvas  
32.5 by 41.2cm., 12 $\frac{3}{4}$  by 16 $\frac{1}{4}$ in.  
Painted in 1883-85.

£ 250,000-300,000



409

PROPERTY FROM A PRIVATE EUROPEAN COLLECTION

**GIORGIO DE CHIRICO** 1888 - 1978

Piazza d'Italia

signed *g. de Chirico* (lower left)  
oil on canvas  
49.7 by 60.7cm., 19 $\frac{5}{8}$  by 23 $\frac{7}{8}$ in.  
Painted in 1961.

£ 150,000-200,000



412

**PIERRE-AUGUSTE RENOIR** 1841 - 1919

Jeune femme assise avec chapeau - fragment

oil on canvas  
24 by 34cm., 9 $\frac{3}{8}$  by 13 $\frac{3}{8}$ in.  
Painted *circa* 1900.

£ 100,000-150,000





413

**GUSTAVE LOISEAU** 1865 - 1935

Les grands arbres en bord de rivière

signed *G. Loiseau* (lower left)  
oil on canvas  
65 by 80.5cm., 25½ by 31½in.  
Painted circa 1918-1920.

£ 80,000-120,000



414

PROPERTY FROM A DISTINGUISHED PRIVATE COLLECTION

**ALFRED SISLEY** 1839 - 1899

Bateaux en réparation à Saint-Mammès,  
canal du Loing

signed *Sisley* (lower right)  
oil on canvas  
38 by 49cm., 15 by 19¼in.  
Painted circa 1885.

£ 200,000-300,000



415

**EUGÈNE BOUDIN** 1824 - 1898

Trouville. Le Port

signed *E. Boudin*, dated .81 and titled (lower right); signed  
*Boudin*, dated 1881 and titled on the reverse  
oil on canvas  
40 by 55cm., 15¾ by 21½in.  
Painted in 1881.

£ 65,000-85,000



416

PROPERTY FROM A DISTINGUISHED PRIVATE COLLECTION

**EUGÈNE BOUDIN** 1824 - 1898

Trouville, scène de plage

signed *E. Boudin* (lower right) and dated 85 (lower left)  
oil on panel  
19.2 by 32.5cm., 7½ by 12¾in.  
Painted in 1885.

£ 80,000-120,000



417

PROPERTY FROM A DISTINGUISHED PRIVATE COLLECTION

**PIERRE BONNARD** 1867 - 1947

Paysage or La Ferme

signed *Bonnard* (lower left)  
oil on panel  
32.8 by 41.1cm., 12⅞ by 16⅞in.  
Painted in 1918.

£ 60,000-80,000



418

**PABLO PICASSO** 1881 - 1973

Maison au toit rouge

dated *Boisgeloup 28-6-XXXIII* (lower left)  
oil on canvas  
65.3 by 80.7cm., 25¾ by 31¾in.  
Painted in Boisgeloup on 28th June 1933.

£ 550,000-700,000





419

PROPERTY OF A DISTINGUISHED PRIVATE COLLECTION

**PABLO PICASSO** 1881 - 1973

Portrait de jeune fille

signed *Picasso* (lower left)  
pencil on paper  
33.6 by 23.1cm., 13¼ by 9½in.  
Drawn in Barcelona in 1903.

⊕ £ 200,000-300,000



420

**AMEDEO MODIGLIANI** 1884 - 1920

Cariatide de face, bras croisés, tête surmontée d'un chapiteau

stamped with the collector's mark and bears the number 29.8 (lower left)  
pen and ink on squared paper  
21.1 by 13.6cm., 8¼ by 5½in.  
Drawn before April 1913.

± £ 120,000-180,000



421

PROPERTY OF AN IMPORTANT PRIVATE COLLECTOR

**ALBERTO GIACOMETTI** 1901 - 1966

Portrait d'André du Bouchet

signed *Alberto Giacometti* and dated 1960. (lower right)  
pencil on paper  
49.7 by 32cm., 19½ by 12½in.  
Drawn in 1960.

⊕ £ 30,000-40,000



422

**PAUL CÉZANNE** 1839 - 1906

Massif de fleurs à l'entrée d'un jardin

pencil and watercolour on paper  
30.6 by 47.5cm., 12 by 18¾in.  
Executed in 1878-80.

± £ 80,000-120,000



423

PROPERTY FROM THE COLLECTION OF BER VAN DER MOLEN

**MAURICE DE VLAMINCK** 1876 - 1958

Le Pont de Chatou

signed *Vlaminck* (lower left)  
oil on canvas  
55.1 by 46.1cm., 21¾ by 18½in.  
Painted circa 1909.

± ⊕ £ 250,000-350,000



○ 424

PROPERTY FROM AN IMPORTANT PRIVATE COLLECTION

**KURT SCHWITTERS** 1887 - 1948

Ohne Titel (Ovales Bild mit Kreuz) (Untitled (Oval Picture with Cross))

oil and wood relief  
34.5 by 28cm., 13½ by 11in.  
Executed circa 1946.

£ 60,000-80,000





○ 425

PROPERTY FROM AN IMPORTANT PRIVATE COLLECTION

**ALEXEJ VON JAWLENSKY** 1864 - 1941

### Abstrakter Kopf: Winter

signed with the artist's initials A.J. (lower left) and dated *XII. 27* (lower right); signed A. Jawlensky, titled and dated *XII. 27* on the reverse  
oil on board laid down on panel  
42 by 32.5cm., 16½ by 12¾in.  
Painted in December 1927.

£ 250,000-350,000



○ 426

PROPERTY FROM AN IMPORTANT PRIVATE COLLECTION

**ALEXEJ VON JAWLENSKY** 1864 - 1941

### Variation

signed with the artist's initials A. J. (lower left)  
oil on linen-finish paper laid down on board  
35.5 by 27.3cm., 14 by 10¾in.  
Painted *circa* 1917.

£ 80,000-120,000



○ 427

PROPERTY FROM AN IMPORTANT PRIVATE COLLECTION

**PAUL KLEE** 1879 - 1940

### Gebirgsbewegung (3= und 4= takt) (Mountain Movement (In Three and Four Time))

signed Klee (upper left); titled, dated 1928.7.8 and numbered J.8 on the mount  
watercolour and pen and ink on paper mounted on the artist's mount  
sheet size: 32.7 by 47.5cm., 12¾ by 18¾in.; mount size: 41 by 54cm., 16½ by 21¼in.  
Executed in 1928.

£ 120,000-180,000



428

PROPERTY OF AN IMPORTANT PRIVATE SWISS COLLECTION

**MARIANNE WEREFKIN** 1860 - 1938

### Andacht (Devotion)

*gouache, pastel and pencil on paper*  
56.1 by 76.4cm., 22¼ by 30in.  
Executed *circa* 1909.

± £ 100,000-150,000



429

PROPERTY FROM A PRIVATE EUROPEAN COLLECTION

**GABRIELE MÜNTER** 1877 - 1962

### Kochel, Schneelandschaft mit Häusern (Kochel, Snowy Landscape with Houses)

signed *Münter*, titled and stamped with the *Nachlass* mark on the reverse  
oil on board  
32.9 by 45.1cm., 13 by 17¾in.  
Painted in 1908-09.

± ⊕ £ 300,000-500,000



○ 430

BY LAND AND BY SEA: THE COLLECTION OF PAUL YEOU CHICHONG

**PAUL GAUGUIN** 1848 - 1903

### L'Abreuvoir - II

signed *p Gauguin* and dated 85 (lower left)  
oil on canvas  
46.4 by 55.5cm., 18¼ by 21¾in.  
Painted in 1885.

± £ 500,000-700,000





431

PROPERTY FROM A PRIVATE COLLECTION, SWITZERLAND

**REMBRANDT BUGATTI** 1884 - 1916

Taureau zébu

inscribed *R. Bugatti*, numbered (1) and stamped with the foundry mark *CIRE PERDUE A.A. HÉBRARD*  
bronze  
length (including base): 51.8cm., 20<sup>3</sup>/<sub>8</sub>in.  
Conceived and cast *circa* 1904; this work is unique.

± £ 200,000-300,000



432

PROPERTY FROM A DISTINGUISHED PRIVATE COLLECTION

**MAX LIEBERMANN** 1847 - 1935

Biergarten in Brannenburg (Beer Garden in Brannenburg)

signed *M. Liebermann* and dated 96 (lower left)  
oil on panel  
37.9 by 46.1cm., 14<sup>7</sup>/<sub>8</sub> by 18<sup>1</sup>/<sub>2</sub>in.  
Painted in 1894.

£ 60,000-80,000



433

PROPERTY FROM A DISTINGUISHED PRIVATE COLLECTION

**PIERRE BONNARD** 1867 - 1947

Montmartre (vue de Paris)

signed *Bonnard* (lower right)  
oil on canvas  
46.4 by 50.3cm., 18<sup>1</sup>/<sub>4</sub> by 19<sup>3</sup>/<sub>4</sub>in.  
Painted in 1905.

£ 250,000-350,000



434

**GIORGIO MORANDI** 1890 - 1964

Natura morta con il busto di gesso  
(Still Life with Gesso Bust)

signed *Morandi* (lower left)  
oil on canvas  
72.8 by 59.8cm., 28<sup>5</sup>/<sub>8</sub> by 23<sup>1</sup>/<sub>2</sub>in.  
Painted in 1911-13.

± £ 200,000-300,000



436

PROPERTY FROM A PRIVATE COLLECTION, SWITZERLAND

**REMBRANDT BUGATTI** 1884 - 1916

Panthère dévorant

inscribed *R. Bugatti*, numbered (3) and stamped with the foundry mark *CIRE PERDUE A.A. HÉBRARD*  
bronze  
length (including base): 69.9cm., 27<sup>1</sup>/<sub>2</sub>in.  
Conceived and cast in bronze *circa* 1906 in a numbered edition of 3.

± W 250,000-350,000



437

PROPERTY FROM A DISTINGUISHED PRIVATE COLLECTION

**MARC CHAGALL** 1887 - 1985

Le bouquet jaune et la corbeille de fruits à l'ananas

signed *Marc Chagall* (lower right); signed *Marc Chagall* on the reverse  
oil and tempera on canvas  
65.2 by 54.2cm., 25<sup>5</sup>/<sub>8</sub> by 21<sup>3</sup>/<sub>8</sub>in.  
Painted in 1979.

± £ 700,000-1,000,000





438

**HENRI MATISSE** 1869 - 1954

Deux femmes assises

signed *Henri Matisse* (lower right) and dated *12.VI.38* (lower left)

charcoal, estompe and chalk on paper  
61.8 by 41.1cm., 24 $\frac{3}{8}$  by 16 $\frac{1}{2}$ in.

Executed on 12th June 1938.

£ 250,000-350,000



439

PROPERTY FROM A DISTINGUISHED PRIVATE COLLECTION

**EDGAR DEGAS** 1834 - 1917

Après le bain (femme nue s'essuyant)

stamped *Degas* (lower left)  
pastel and charcoal on canvas  
82.5 by 77.2cm., 32 $\frac{1}{2}$  by 30 $\frac{3}{8}$ in.  
Executed *circa* 1898.

£ 400,000-600,000



440

PROPERTY FROM AN IMPORTANT PRIVATE COLLECTION

**HENRI MATISSE** 1869 - 1954

Greta Prozor

dedicated *Greta Prozor par Henri Matisse* (lower right)  
black crayon on paper  
37.3 by 56cm., 14 $\frac{5}{8}$  by 22in.  
Drawn *circa* 1916.

£ 50,000-70,000



441

PROPERTY FROM A DISTINGUISHED PRIVATE COLLECTION

**AUGUSTE RODIN** 1840 - 1917

Torse d'Adèle

signed *A. Rodin*, inscribed © by *Musée Rodin 1959* and with the foundry mark *Georges Rudier/Fondeur. Paris*; with the raised signature *A. Rodin* on the inside  
bronze

height: 44.5cm., 17 $\frac{1}{2}$ in.

Conceived *circa* 1878-82 and cast in bronze in an edition of at least 13; this example was cast in bronze in 1959.

£ 60,000-80,000



442

PROPERTY FROM A DISTINGUISHED PRIVATE EUROPEAN COLLECTION

**PIERRE BONNARD** 1867 - 1947

Jeune femme assise

stamped *Bonnard* (upper right)  
oil on canvas  
62.2 by 43.2cm., 24 $\frac{1}{2}$  by 17in.  
Painted *circa* 1915.

£ 200,000-300,000



443

PROPERTY FROM A DISTINGUISHED PRIVATE COLLECTION

**EDOUARD VUILLARD** 1868 - 1940

La partie de whist chez Marcelle Aron

indistinctly stamped *E. Vuillard* (lower right)  
pastel on paper  
64 by 44.2cm., 25 $\frac{1}{4}$  by 17 $\frac{3}{8}$ in.  
Executed in 1911-12.

£ 80,000-120,000





444

PROPERTY FROM A PRIVATE COLLECTION, SWITZERLAND

**REMBRANDT BUGATTI** 1884 - 1916

Femme à genoux (Le réveil)

inscribed *R. Bugatti*, numbered *M* and stamped with the foundry mark *CIRE PERDUE A.A. HÉBRARD*  
bronze  
height (including base): 34.7 cm., 13<sup>7</sup>/<sub>8</sub> in.  
Conceived and cast in bronze *circa* 1907 in a numbered edition of 7 plus 1 reference model.

± £ 100,000-150,000



445

**ÉMILE BERNARD** 1868 - 1941

Sept baigneuses

signed *Émile Bernard* (lower right)  
oil on canvas  
61 by 63 cm., 24 by 24<sup>3</sup>/<sub>8</sub> in.  
Painted *circa* 1889.

± £ 80,000-120,000



○ 446

BY LAND AND BY SEA: THE COLLECTION OF PAUL YEOU CHICHONG

**HENRI LEBASQUE** 1865 - 1937

Nu mettant sa chemise dans un intérieur

signed *Lebasque* (lower right)  
oil on canvas  
92.5 by 50 cm., 36<sup>3</sup>/<sub>8</sub> by 19<sup>5</sup>/<sub>8</sub> in.  
Painted *circa* 1925.

± £ 80,000-120,000



447

PROPERTY FROM A DISTINGUISHED PRIVATE COLLECTION

**KEES VAN DONGEN** 1877 - 1968

Femme en déshabillé

signed *van Dongen*. (lower right)  
oil and pencil on canvas  
65 by 54.4 cm., 25<sup>1</sup>/<sub>2</sub> by 21<sup>1</sup>/<sub>8</sub> in.  
Painted *circa* 1911.

± £ 400,000-600,000



448

PICASSO FIRST HAND: WORKS FROM THE COLLECTION OF MARINA PICASSO

**PABLO PICASSO** 1881 - 1973

Portrait de Jacqueline en robe imprimée

stamped with the foundry mark *E. GodArd Fondr Paris*  
bronze  
34.5 by 26.6 cm., 13<sup>1</sup>/<sub>2</sub> by 10<sup>1</sup>/<sub>2</sub> in.  
Conceived in 1962 and cast in bronze in 1964 in an unnumbered edition of 2.

± ± £ 150,000-200,000



449

PICASSO FIRST HAND: WORKS FROM THE COLLECTION OF MARINA PICASSO

**PABLO PICASSO** 1881 - 1973

Le verre sous la lampe

stamped with the foundry mark *E. GodArd Fondr Paris*  
bronze  
34.5 by 26.8 cm., 13<sup>1</sup>/<sub>2</sub> by 10<sup>1</sup>/<sub>2</sub> in.  
Conceived in 1962 and cast in bronze *circa* 1964 in an unnumbered edition of 2.

± ± £ 60,000-80,000





450

PICASSO FIRST HAND: WORKS FROM THE COLLECTION OF MARINA  
PICASSO

**PABLO PICASSO** 1881 - 1973

Jacqueline au bandeau

stamped with the foundry mark *E. GodArd Fondr Paris*  
bronze

34.6 by 26.6cm., 13½ by 10½in.

Conceived in 1962 and cast in bronze in 1964 in an  
unnumbered edition of 2.

£ 100,000-150,000



451

PICASSO FIRST HAND: WORKS FROM THE COLLECTION OF MARINA  
PICASSO

**PABLO PICASSO** 1881 - 1973

Jacqueline lisant, de trois quarts

stamped with the foundry mark *E. GodArd Fondr Paris*  
bronze

63.4 by 52.5cm., 25 by 20½in.

Conceived in 1962 and cast in bronze *circa* 1964 in an  
unnumbered edition of 2.

£ 200,000-300,000



452

PROPERTY FROM AN IMPORTANT PRIVATE COLLECTION

**AUGUSTE HERBIN** 1882 - 1960

Neige

signed *herbin* and dated 1953 (lower right); titled (lower left)  
gouache and pen and ink on paper

25.4 by 34cm., 10 by 13¾ in.

Executed in 1953.

£ 8,000-12,000



453

PROPERTY FROM A PRIVATE COLLECTION

**AFTER FERNAND LÉGER** 1881 - 1955

Les loisirs sur fond rouge

bears the signature *F. Leger* (lower right)

glass and stone mosaic

205 by 326cm., 80¾ by 128¾in.

£ 400,000-600,000



454

PROPERTY FROM A DISTINGUISHED PRIVATE COLLECTION

**BERNARD BUFFET** 1928 - 1999

Le grand cirque, rideau de scène

signed *Bernard Buffet* and dated 68 (centre right)

brush and ink, gouache, coloured crayon and pencil on paper  
50.4 by 72.4cm., 19½ by 28½in.

Executed in 1968.

£ 120,000-180,000



455

PROPERTY FROM A DISTINGUISHED PRIVATE EUROPEAN COLLECTION

**FRANCIS PICABIA** 1879 - 1953

Le Mexicain

signed *Francis Picabia* (lower left)

oil on panel

109.9 by 100.3cm., 43¼ by 39½in.

Painted *circa* 1937.

£ 300,000-500,000





456

**GEORGES ROUAULT** 1871 - 1958

Paysage biblique

signed *G Rouault* (lower right)  
oil on paper laid down on panel  
49.5 by 68cm., 19½ by 26¾in.  
Painted in 1946-48.

£ 80,000-120,000



457

PROPERTY FROM A PRIVATE COLLECTOR, LONDON

**PABLO PICASSO** 1881 - 1973

Homme accroupi et femme nue

signed *Picasso* and dated 2. mai. 40. (lower right)  
pen and ink on paper  
38 by 46cm., 15 by 18½in.  
Drawn in May 1940.

£ 200,000-300,000



458

PROPERTY FROM A PRIVATE EUROPEAN COLLECTION

**LEONORA CARRINGTON** 1917 - 2011

A Set of 3 Masks

gouache, decorator's gold paint, papier-mâché, cardboard, plaster of Paris, scrim, canvas, metal armature, tape, string and elastic  
width: 54.5cm., 21½in. (yellow mask); width: 36cm., 14½in. (red mask); width: 49.5cm., 19½in. (turquoise mask)  
Executed in 1959.

£ 35,000-45,000



459

C'EST FINI: AN IMPORTANT PRIVATE COLLECTION OF SURREALIST ART

**LEONOR FINI** 1908 - 1996

L'homme aux masques or Portrait de Enrique Álvarez Félix

signed *Leonor Fini* (lower right)  
oil on canvas  
61.3 by 38.2cm., 24½ by 15in.  
Painted in 1949.

£ 60,000-80,000



460

PROPERTY FROM A EUROPEAN PRIVATE COLLECTION

**GUSTAVE VAN DE WOESTYNE** 1881 - 1947

Hij die luistert (He Who Listens)

signed *Gve VAN DE WOESTYNE* (lower right)  
oil on canvas  
70.5 by 60cm., 27¾ by 23½in.  
Painted in 1926.

£ 250,000-350,000



461

**AMEDEO MODIGLIANI** 1884 - 1920

Tête de face

stamped with the collector's mark and bears the number 25,4 (lower left)  
black crayon on paper  
42.9 by 27.2cm., 16⅞ by 10¾in.  
Drawn in 1911-12.

£ 160,000-200,000





1 of 6 illustrated



462

**JAN TOOROP** 1858 - 1928

**Het Offer (The Sacrifice)**

a. signed *JThToorop*, and indistinctly dated (lower left)  
various dimensions  
pencil, coloured pencil and crayon on 6 sheets of paper  
Executed in 1927.

£ 60,000-80,000



463

PROPERTY FROM A PRIVATE EUROPEAN COLLECTION

**HENRI MATISSE** 1869 - 1954

**Tête de fille**

signed *Henri Matisse* and dated *oct. 1932* (lower right)  
pencil on paper  
32.5 by 25cm., 12¾ by 9⅞in.  
Drawn in October 1932.

£ 30,000-40,000



464

PROPERTY FROM A PRIVATE FAMILY COLLECTION

**PABLO PICASSO** 1881 - 1973

**Arlequin**

signed *Picasso* and dated *1917* (lower right)  
pencil on paper  
27 by 20.2cm., 10⅝ by 8in.  
Drawn in 1917.

£ 55,000-75,000



465

PROPERTY FROM A DISTINGUISHED PRIVATE COLLECTION

**GEORGES ROUAULT** 1871 - 1958

**Tête de clown**

signed *G. Rouault* (lower right)  
oil on paper mounted on muslin  
63.7 by 48.4cm., 25 by 19in.  
Painted in 1939.

£ 180,000-250,000



466

PROPERTY FROM A DISTINGUISHED PRIVATE COLLECTION

**BERNARD BUFFET** 1928 - 1999

**Clown**

signed *Bernard Buffet* and dated *66* (lower left)  
oil on canvas  
81 by 65.5cm., 32 by 25¾in.  
Painted in 1966.

£ 300,000-500,000



467

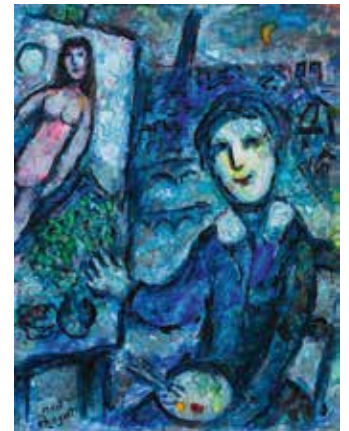
PROPERTY OF A DISTINGUISHED PRIVATE COLLECTOR

**MARC CHAGALL** 1887 - 1985

**L'artiste et le nu**

signed *MArc Chagall* (lower left); signed *Marc Chagall* and dated *1978* on the reverse  
tempera, gouache, brush and ink, pastel and pencil on masonite  
35 by 27cm., 13¾ by 10⅝in.  
Executed in 1978.

£ 300,000-400,000





○ 468

PROPERTY FROM AN IMPORTANT PRIVATE COLLECTION

**KEES VAN DONGEN** 1877 - 1968

Le Nil à Assouan

signed *van Dongen* (lower left)  
oil on canvas  
55.1 by 38.5cm., 21¾ by 15¼in.  
Painted in 1928.

⊕ £ 70,000-90,000



469

PROPERTY FROM A PRIVATE EUROPEAN COLLECTION

**TAMARA DE LEMPICKA** 1898 - 1980

L'heure bleue III

signed *LEMPICKA*. (lower left)  
oil on canvas  
152.5 by 101.7cm., 60 by 40in.  
Executed *circa* 1966.

⊕ £ 650,000-850,000



470

PROPERTY OF A PRIVATE COLLECTION, UNITED KINGDOM

**MAURICE DENIS** 1870 - 1943

Madone aux hortensias

signed *MAVRICE DENIS* and dated 1924 (lower left)  
oil on canvas  
115 by 125cm., 45¼ by 49¼in.  
Painted in 1924.

£ 100,000-150,000



○ 471

BY LAND AND BY SEA: THE COLLECTION OF PAUL YEOU CHICHONG

**ALBERT MARQUET** 1875 - 1947

Céret, "Le Castellás"

signed *marquet* (lower left)  
oil on canvas  
60 by 81cm., 23⅝ by 31⅞in.  
Painted in 1940.

‡ £ 60,000-80,000



472

**CARLOS NADAL** 1917 - 1998

Fête nautique

signed *Nadal* (lower right); signed *Nadal*, titled and bearing the *Atelier* stamp on the reverse  
oil and acrylic on canvas  
73 by 92cm., 28¾ by 3⅝in.  
Executed in Spain *circa* 1989-90.

‡ ⊕ £ 40,000-60,000



473

**RAOUL DUFY** 1877 - 1953

Le cargo noir à la jetée bleue

signed *Raoul Dufy* (lower left)  
oil on canvas  
33 by 41cm., 13 by 16¼in.  
Painted in 1949.

‡ £ 80,000-120,000





475

PROPERTY FROM A DISTINGUISHED PRIVATE COLLECTION

**PIERRE-AUGUSTE RENOIR** 1841 - 1919

Roses de Wargemont - panneau décoratif

signed *Renoir.* and dated 79. (lower right)  
oil on panel  
74.3 by 83.2cm., 29¼ by 32¾in.  
Painted in Wargemont in 1879.

£ 400,000-600,000



○ 476

BY LAND AND BY SEA: THE COLLECTION OF PAUL YEOU CHICHONG

**HENRI MARTIN** 1860 - 1943

Bassin dans le parc de Marquayrol

signed *Henri Martin* (lower left)  
oil on canvas  
85.5 by 109cm., 33½ by 42⅞in.  
Painted *circa* 1910.

± £ 100,000-150,000



477

**ALBERT MARQUET** 1875 - 1947

Temps clair à Alger

signed *marquet* (lower left)  
oil on canvas  
38 by 46cm., 15 by 18½in.  
Painted *circa* 1943-43.

± £ 40,000-60,000



478

PROPERTY FROM A DISTINGUISHED PRIVATE COLLECTION

**ALFRED SISLEY** 1839 - 1899

L'inondation, effet du matin sur le Loing

signed *Sisley.* and dated 96 (lower right)  
oil on canvas  
60.4 by 73.4cm., 23¾ by 28⅞in.  
Painted in 1896.

£ 500,000-700,000



○ 479

BY LAND AND BY SEA: THE COLLECTION OF PAUL YEOU CHICHONG

**HENRY MORET** 1856 - 1913

Les dunes

signed *Henry Moret* (lower right)  
oil on canvas  
46.2 by 61.4cm., 18⅞ by 24⅞in.  
Painted *circa* 1910-12.

± £ 60,000-80,000



○ 480

BY LAND AND BY SEA: THE COLLECTION OF PAUL YEOU CHICHONG

**PIERRE-AUGUSTE RENOIR** 1841 - 1919

Poissons

signed *Renoir* (upper left)  
oil on canvas  
27 by 46cm., 10⅞ by 18⅞in.  
Painted *circa* 1915.

± £ 200,000-300,000





○ 481

BY LAND AND BY SEA: THE COLLECTION OF PAUL YEOU CHICHONG

**ALBERT DUBOIS-PILLET** 1846 - 1890

Nature morte aux poissons

signed *du Bois PillEt* (lower left)  
oil on canvas  
59 by 72.5cm., 23¼ by 28½in.  
Painted in 1885.

£ 35,000-55,000



○ 482

BY LAND AND BY SEA: THE COLLECTION OF PAUL YEOU CHICHONG

**MAURICE DE VLAMINCK** 1876 - 1958

Nature morte aux poires

signed *Vlaminck* (lower right)  
oil on canvas  
73.3 by 92.5cm., 28¾ by 36¾in.  
Painted circa 1928.

£ 40,000-60,000



○ 483

BY LAND AND BY SEA: THE COLLECTION OF PAUL YEOU CHICHONG

**HENRI CHARLES MANGUIN** 1874 - 1949

Grenades et arbouses

signed *Manguin* (lower right)  
oil on canvas  
73 by 92cm., 28¾ by 36¼in.  
Painted in 1938.

£ 30,000-50,000



○ 484

BY LAND AND BY SEA: THE COLLECTION OF PAUL YEOU CHICHONG

**LOUIS VALTAT** 1869 - 1952

Les poissons

signed *L. Valtat* (lower right)  
oil on burlap  
82 by 101cm., 32¼ by 39¾in.  
Painted in 1910.

£ 50,000-70,000



485

PROPERTY FROM A PRIVATE COLLECTOR, LONDON

**FERNAND LÉGER** 1881 - 1955

Le vase noir

signed *F. LEGER.* and dated 47 (lower right); signed *F. LEGER.*, dated 47 and titled on the reverse  
oil on canvas  
65 by 50.5cm., 25½ by 19¾in.  
Painted in 1947.

£ 300,000-500,000



486

PROPERTY FROM A PRIVATE SWEDISH COLLECTION

**KEES VAN DONGEN** 1877 - 1968

Au cirque Médrano

signed *van Dongen.* (lower right); titled on the reverse  
oil on canvas  
49.5 by 65cm., 19½ by 25½in.  
Painted circa 1955.

£ 250,000-350,000





487

PROPERTY FROM A DISTINGUISHED PRIVATE COLLECTION

**REUVEN RUBIN** 1893 - 1974

### Homage to Casals

signed *Rubin* and in Hebrew (lower left); signed *Rubin* and in Hebrew, titled and dated 1962 on the reverse  
oil on canvas  
31.5 by 26.5cm., 12 $\frac{3}{8}$  by 10 $\frac{3}{8}$ in.  
Painted circa 1962.

⊕ £ 15,000-20,000



○ 488

BY LAND AND BY SEA: THE COLLECTION OF PAUL YEOU CHICHONG

**LOUIS MARCOUSSIS** 1883 - 1941

### Le rouget

signed *Marcoussis.* and dated 25. (lower left)  
oil on canvas  
60 by 73cm., 23 $\frac{3}{4}$  by 28 $\frac{3}{4}$ in.  
Painted in 1925.

⊕ £ 40,000-60,000



○ 489

BY LAND AND BY SEA: THE COLLECTION OF PAUL YEOU CHICHONG

**ANDRÉ MASSON** 1896 - 1987

### Rascasses

signed *andré masson* (lower left)  
oil on canvas  
80 by 95cm., 31 $\frac{1}{2}$  by 37 $\frac{3}{8}$ in.  
Painted in 1955.

⊕ £ 50,000-70,000



490

**JUAN GRIS** 1887 - 1927

### Le livre

signed *Juan Gris* and dated 24 (lower right)  
oil on canvas  
24.5 by 33.2cm., 9 $\frac{5}{8}$  by 13 $\frac{1}{8}$ in.  
Painted in August-December 1924.

⊕ £ 120,000-180,000



○ 491

PROPERTY FROM AN IMPORTANT PRIVATE COLLECTION

**AUGUSTE HERBIN** 1882 - 1960

### Mer

signed *herbin* and dated 1945 (lower right); titled (lower left)  
gouache on paper  
41 by 30.4cm., 16 $\frac{1}{8}$  by 12in.  
Executed in 1945.

⊕ £ 8,000-12,000



492

PROPERTY FROM A PRIVATE COLLECTOR, LONDON

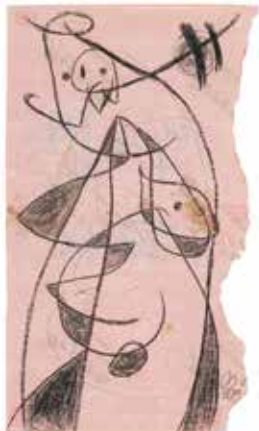
**SALVADOR DALÍ** 1904 - 1989

### Homage à Duchamp

signed *Dalí*, dated 1966 (lower right) and titled (upper centre)  
airbrush and pen and brush and ink and ball-point pen on paper  
56.5 by 38.6cm., 22 $\frac{1}{4}$  by 15 $\frac{1}{4}$ in.  
Executed in 1966.

⊕ £ 30,000-40,000





493

**JOAN MIRÓ** 1893 - 1983

### Femme

signed *Miró* (lower right); titled and dated 14/VII/77./ on the reverse

wax crayon and pencil on gift paper

31.2 by 18.5cm., 12¼ by 7¼in.

Executed on 14th July 1977.

£ 30,000-40,000



494

PROPERTY FROM A DISTINGUISHED PRIVATE COLLECTION

**REUVEN RUBIN** 1893 - 1974

### Anemones on My Window

signed *Rubin* and in Hebrew (upper right); signed *Rubin* and titled on the reverse

oil on canvas

46.5 by 38.8cm., 18¼ by 15¼in.

Executed circa 1962.

£ 25,000-35,000



495

BY LAND AND BY SEA: THE COLLECTION OF PAUL YEOU CHICHONG

**OSCAR DOMINGUEZ** 1906 - 1957

### Nature morte aux pêches

signed *Dominguez*, dated 52 and dedicated *Pour mi cher ami Goldschmidt* (lower right)

gouache and charcoal on paper

50.2 by 63.8cm., 19¾ by 25¼in.

Executed in 1952.

£ 30,000-40,000



496

PROPERTY FROM A PRIVATE COLLECTOR, LONDON

**GEORGE GROSZ** 1893 - 1959

### The Hemingway Story

signed *Grosz* (lower right); titled on the reverse

watercolour and pen and ink on paper

39 by 50cm., 15½ by 19¾in.

Executed circa 1954-55.

£ 18,000-25,000



497

PROPERTY FROM AN IMPORTANT PRIVATE COLLECTION

**GEORGES ROUAULT** 1871 - 1958

### Christ et pêcheurs

signed *G. Rouault* (lower left)

oil on board

33.7 by 46.3cm., 13¼ by 18¼in.

Painted in 1938-39.

£ 40,000-60,000



498

**GIORGIO DE CHIRICO** 1888 - 1978

### Cavalieri presso un castello

signed *g. de Chirico* (lower right); signed *Giorgio de Chirico* and titled on the reverse

oil on canvas

35.3 by 55.4cm., 13⅞ by 21¾in.

Painted in 1951.

£ 70,000-90,000





499

**GEORGES ROUAULT** 1871 - 1958

Paysage africain

signed *Georges Rouault* and dated 1934 (lower right)  
oil and gouache on paper laid down on canvas  
43 by 32.5cm., 16 $\frac{7}{8}$  by 12 $\frac{3}{4}$ in.  
Executed in 1934.

£ 20,000-30,000



500

PROPERTY FROM A DISTINGUISHED PRIVATE EUROPEAN COLLECTION

**ALEXANDER ARCHIPENKO** 1887 - 1964

White, Gray and Yellow (Seated Nude)

signed *Archipenko* (lower right)  
oil and crayon on card  
71.3 by 55.8cm., 28 by 22in.  
Painted in 1938.

£ 200,000-300,000



501

BY LAND AND BY SEA: THE COLLECTION OF PAUL YEOU CHICHONG

**JULES PASCIN** 1885 - 1930

Nu sur canapé

signed *Pascin* (lower left)  
oil and charcoal on canvas  
92.5 by 74cm., 36 $\frac{3}{8}$  by 29 $\frac{1}{2}$ in.  
Painted in Paris in 1924.

£ 20,000-30,000



502

BY LAND AND BY SEA: THE COLLECTION OF PAUL YEOU CHICHONG

**JULES PASCIN** 1885 - 1930

Femme au divan

signed *Pascin* indistinctly (lower left); signed *Pascin* on the reverse  
oil and charcoal on canvas  
74 by 90.8cm., 29 $\frac{1}{8}$  by 35 $\frac{3}{4}$ in.  
Painted circa 1926-27.

£ 15,000-20,000



503

PROPERTY FROM A DISTINGUISHED PRIVATE EUROPEAN COLLECTION

**PIERRE BONNARD** 1867 - 1947

Personnage et chien

signed *Bonnard* (lower right)  
oil on canvas  
45 by 59cm., 17 $\frac{3}{4}$  by 23 $\frac{1}{4}$ in.  
Painted circa 1905.

£ 120,000-180,000



504

PROPERTY FROM A DISTINGUISHED PRIVATE EUROPEAN COLLECTION

**KEES VAN DONGEN** 1877 - 1968

La Tour Eiffel

signed *Van Dongen* (lower left); signed *Kees van Dongen* and titled on the stretcher  
oil on canvas  
46 by 55cm., 18 $\frac{1}{8}$  by 21 $\frac{5}{8}$ in.  
Painted in 1904.

£ 120,000-180,000





505

PROPERTY FROM A DISTINGUISHED PRIVATE COLLECTION

**MAX LIEBERMANN** 1847 - 1935

Allee im Tiergarten mit Spaziergängern und Kutsche (Avenue in Tiergarten with Pedestrians and a Carriage)

signed *M. Liebermann* (lower left)  
oil on panel  
37.3 by 45.8cm., 14¾ by 18in.  
Painted *circa* 1922.

£ 120,000-180,000



○ 506

BY LAND AND BY SEA: THE COLLECTION OF PAUL YEOU CHICHONG

**HENRI LE SIDANER** 1862 - 1939

La maison un soir de lune, Gerberoy

signed indistinctly *Le Sidaner* (lower left)  
oil on canvas  
73 by 60cm., 28¾ by 23⅝in.  
Painted *circa* 1925.

± £ 80,000-120,000



○ 507

BY LAND AND BY SEA: THE COLLECTION OF PAUL YEOU CHICHONG

**EUGÈNE BOUDIN** 1824 - 1898

Hameau et rivière aux environs de Dunkerque

signed *E. Boudin* (lower left) and dated 89. (lower right)  
oil on canvas  
41 by 55cm., 16⅞ by 21⅞in.  
Painted in 1889.

± £ 50,000-70,000



508

**PAUL SIGNAC** 1863 - 1935

Antibes

signed *P. Signac*, titled and dated 1914 (lower left)  
watercolour and pencil on paper  
29.5 by 40.5cm., 11⅝ by 16in.  
Executed in 1914.

± £ 35,000-45,000



509

PROPERTY FROM A DISTINGUISHED PRIVATE EUROPEAN COLLECTION

**PIERRE-AUGUSTE RENOIR** 1841 - 1919

Etude de chien or Chien de meute sur fond jaune

signed *R.* (lower right)  
oil on canvas  
23.7 by 26.3 cm., 9⅜ by 10⅜in.  
Painted *circa* 1912.

± £ 60,000-80,000



510

PROPERTY FROM A PRIVATE COLLECTOR, LONDON

**KEES VAN DONGEN** 1877 - 1968

Visage de femme

signed *van Dongen* (lower right)  
oil on paper laid down on canvas  
49 by 43.5 cm., 19¼ by 17⅞in.  
Painted *circa* 1929.

± £ 60,000-80,000



## BRITISH ART: THE JUBILEE AUCTION

Anderson, Hurvin 23  
Auerbach, Frank 8

Bacon, Francis 10  
Banksy 17  
Bonington 12  
Boty, P. 4  
Burra, E.J. 20

Cadell, F.C.B. 26  
Chadwick, L. 27  
Constable 1

Gainsborough 16  
Gilbert and George 32

Hepworth, B. 5, 22  
Hirst, Damien 30  
Hockney, David 15  
Hodgkin, Howard 7

Kossoff, L. 19

Levine, Chris 34  
Lowry, L.S. 14, 25

Millais, Sir John Everett 13  
Moore, H. 11

Odundo, M. 2

Riley, Bridget 6, 21

Scully, Sean 31  
Shepard, Ernest H. 33

Tissot, James Jacques Joseph 28  
Turner, Joseph Mallord William 18

Verelst 24

Wootton 29

Yiadam-Boakye, Lynette 9  
Yukhnovich, Flora 3

## MODERN & CONTEMPORARY EVENING AUCTION

Arp, Jean 106

Baselitz, Georg 122, 127  
Bonnard, Pierre 136  
Boudin, Eugène 141, 146  
Bugatti, Rembrandt 130

De Kooning, Willem 124  
Degas, Edgar 138

Fontana, Lucio 118

Giacometti, Alberto 109  
Grotjahn, Mark 133  
Gursky, Andreas 132

Hirst, Damien 149  
Hodgkin, Howard 123  
Hughes, Shara 115

Kandinsky, Wassily 112  
Kirchner, Ernst Ludwig 111  
Klee, Paul 107, 113, 134, 144

Leigh, Simone 102

Magritte, René 104  
Majerus, Michel 101  
Man Ray 131  
Marini, Marino 148  
Monet, Claude 120

Oehlen, Albert 142

Picasso, Pablo 143  
Pissarro, Camille 119, 137, 147  
Polke, Sigmar 128  
Prince, Richard 140

Renoir, Pierre-Auguste 121  
Richter, Gerhard 105, 126

Schiele, Egon 108  
Signac, Paul 145  
Strindberg, August 139

Warhol, Andy 110, 135  
Watts, Ouattara 116  
Weyant, Anna 103  
Whitney, Stanley 117

## MODERN BRITISH DAY AUCTION

Aitchison, C. 279  
Armitage, K. 264, 285  
Auerbach, F. 286, 288

Bell, V. 214  
Blake, P. 274  
Bomberg, D. 251, 252  
Brockhurst, G. L. 222, 223  
Butler, R. 270

Caro, Anthony 287  
Caulfield, P. 273  
Chadwick, L. 266, 283

Davie, A. 265, 267

Fedden, M. 256  
Frink, E. 217, 219, 232, 246, 249, 258, 261, 280

Gertler, M. 213, 253

Hepworth, B. 209  
Heron, P. 269, 271  
Hillier, T. 259  
Hitchens, I. 205, 250, 260  
Hodgkin, E. 239

Innes, C. 278

John, A. 215, 218, 227, 247  
John, G. 224

Kossoff, L. 289

Laing, G. 272  
Lanyon, P. 257, 262  
Lavery, J. 228  
Lewis, W. 220  
Lowry, L.S. 230, 231, 244, 245

McWilliam, F.E. 254  
Moore, H. 204, 210  
Morris, C. 233, 234, 235, 236, 237, 238

Nevinson, C.R.W. 226  
Nicholson, B. 201, 202, 208, 211

Odundo, M. 277

Paolozzi, E. 281, 284

Riley, B. 275

Sickert, W. 212, 216  
Smith, M. 248, 255  
Spencer, S. 221  
Steer, P.W. 225  
Sutherland, G. 240, 242, 243

Tilson, J. 282  
Tunnard, J. 263  
Turnbull, W. 268

Vaughan, K. 241

Wallis, A. 203, 207  
Wood, C. 206

Young, E. 276

## MODERN & CONTEMPORARY DAY AUCTION

Aboudia 347, 355  
Archipenko, Alexander 500

Banksy 377, 378, 379, 380, 381, 382  
Baselitz, Georg 361  
Bernard, Émile 445  
Bonnard, Pierre 417, 433, 442, 503  
Boudin, Eugène 415, 416, 507  
Boyce, Sonia 327  
Brown, Cecily 332  
Buffet, Bernard 454, 466  
Bugatti, Rembrandt 431, 436, 444  
Butzer, André 356

Caro, Anthony 324  
Carrington, Leonora 458  
Chagall, Marc 407, 410, 437, 467  
Champs, Godwin 352  
Champs Namuyimba, Godwin 348  
Chirico, Giorgio de 409, 498  
Condo, George 338, 342, 343  
Cook, Ethan 375  
Cézanne, Paul 422

Dalí, Salvador 402, 492  
Degas, Edgar 439  
Denis, Maurice 470  
Doig, Peter 330  
Domínguez, Óscar 495  
Dongen, Kees van 447, 468, 486, 504, 510  
Dubois-Pillet, Albert 481  
Dubuffet, Jean 368  
Dufy, Raoul 406, 473  
Dumas, Marlene 334

Emin, Tracey 326, 328  
Epp, Oli 320  
Euler, Jana 357

Fautrier, Jean 369  
Finii, Leonor 401, 459  
Fontana, Lucio 365, 366  
Förg, Günther 358, 364  
Fratino, Louis 345

Gauguin, Paul 430  
Genovés, Juan 388  
Ghenie, Adrian 329  
Giacometti, Alberto 421  
Gilbert and George 336  
Gormley, Antony 323  
Green, Madelynn 305  
Gris, Juan 490  
Grosz, George 496

Herbin, Auguste 452, 491  
Hirst, Damien 319, 321, 390  
Hodgkin, Howard 331  
Hughes, Shara 306

Ismail, Isshaq 316, 350

Jawlensky, Alexej von 425, 426  
Johns, Jasper 341  
Juszkiewicz, Ewa 301

Kerwick, Jordy 308, 314, 317  
Kher, Bharti 387  
Klee, Paul 427  
Kosuth, Joseph 383  
Kusama, Yayoi 312, 318

Le Sidaner, Henri 506  
Lebasque, Henri 446  
Lempicka, Tamara de 469  
Liebermann, Max 432, 505  
Loiseau, Gustave 413  
Long, Richard 389  
Lucas, Sarah 325  
Léger, After Fernand 453  
Léger, Fernand 485

## MODERN & CONTEMPORARY DAY AUCTION

Magritte, René 408	Renoir, Pierre-Auguste 411, 412, 475, 480, 509
Manguin, Henri 483	Richter, Gerhard 363
Marcoussis, Louis 488	Rodin, Auguste 441
Marquet, Albert 471, 477	Rodriguez-Graham, Omar 346
Martin, Henri 476	Rokkaku, Ayako 315
Martinez, Eddie 373, 376	Rouault, Georges 456, 465, 497, 499
Masson, André 489	Rubin, Reuven 487, 494
Mathieu, Georges 371	Ruscha, Ed 337
Matisse, Henri 438, 440, 463	
Miller, Harland 335	Sachs, Tom 310
Miró, Joan 493	Schwitters, Kurt 424
Mitoraj, Igor 367	Shiota, Chiharu 313
Modigliani, Amedeo 420, 461	Signac, Paul 508
Morandi, Giorgio 434	Sisley, Alfred 414, 478
Moret, Henry 479	Struth, Thomas 384
Morley, Malcolm 385	
Muholi, Zanele 351	Thek, Paul 386
Murillo, Oscar 374	Toor, Salman 344
Münter, Gabriele 429	Toorop, Jan 462
Nadal, Carlos 472	Valtat, Louis 484
Nara, Yoshitomo 311	Vlaminck, Maurice de 423, 482
Noir, Thierry 349	Vuillard, Edouard 443
	Vô, Danh 339
Ofili, Chris 322	
	Walker, Caroline 303
Pascin, Jules 501, 502	Warhol, Andy 340
Peyton, Elizabeth 333	Werefkin, Marianne 428
Picabia, Francis 455	West, Franz 359, 362
Picasso, Pablo 403, 404, 405, 418, 419, 448, 449, 450, 451, 457, 464	Whitney, Stanley 307
Plans, Edgar 309, 353	Willem, Albert 354
Poliakoff, Serge 370	Woestyne, Gustave van de 460
Polke, Sigmar 360	Wols 372
	Wood, Issy 302
Quarles, Christina 304	



This page  
LOT 124